

Automotive and Aircraft Specific Purpose Tools

Aircraft and Automotive Tools



SPRING LOADED STRAP DUPLICATORS Pg M4



INVERTED PILOT STRAP DUPLICATORS Pg M4



FLEXIBLE DRIVERS TYPE I Pg M9



COLLET CHUCKS Pg M8



DRILL ADAPTERS Pg M8



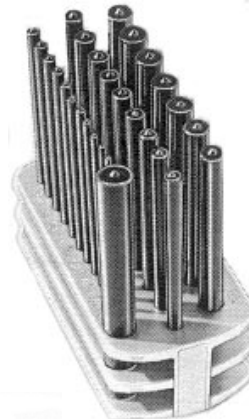
SPOT PUNCHES Pg M2



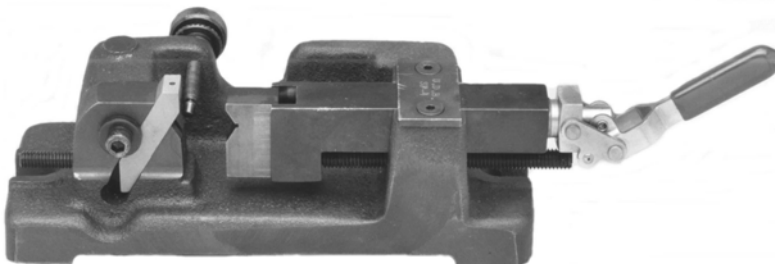
OPTICAL MOUNT
COVERS Pg M6



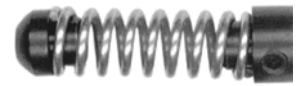
TELESCOPE MOUNT
ASSEMBLIES Pg M6



TRANSFER
PUNCHES & SETS Pg M3



SAFETY WIRE DRILLING FIXTURES Pg M5



DRILL STOPS Pg M4



FLEXIBLE DRIVERS TYPE II Pg M9



DRILL STOPS Pg M4



FLEXIBLE DRIVER SHANKS Pg M9



MICRO-CONTROLLED
COUNTERSINK
SUPER STOP Pg M7

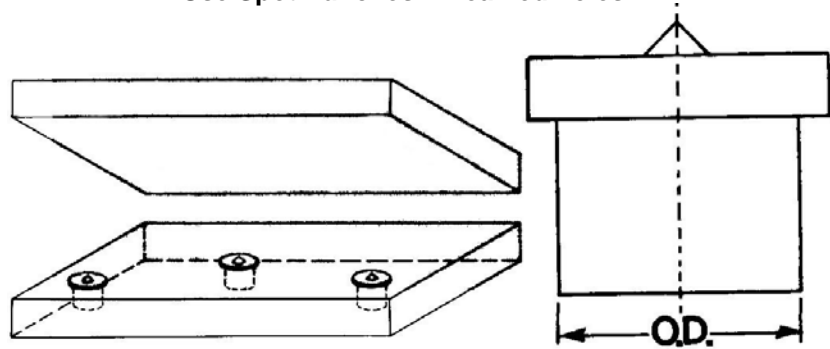
Blind Hole Spot Punch

UNITED Precision Spot Punches

SPOT PUNCHES

FASTER SIMPLIFIED LOCATION FOR OPPOSITE CENTERS!

Use Spot Punches in reamed holes.



The last four digits of the Part Number represent the Spot Punch size in decimals.

Example:
UDB-131250 = 1/8

SETS SPOT PUNCHES



UDB-131001 MASTER SET
108 PIECES
18 SIZES
1/8 THRU 21/32 BY 32nds
SIX OF EACH

UDB-131002 GENERAL SET
66 PIECES
11 SIZES
11/16 THRU 1" BY 32nds
SIX OF EACH

UNITED BLIND HOLE SPOT PUNCHES do the job quickly, simply and efficiently when holes are not through-holes (Dowel Pin, Perforating Punches and Arbor Holes).
Use Spot Punches in reamed holes.

PART NUMBER	SIZE	PART NUMBER	SIZE
UDB-131250	1/8	UDB-133594	23/64
UDB-131285	#30	UDB-133750	3/8
UDB-131360	#29	UDB-133906	25/64
UDB-131406	9/64	UDB-134062	13/32
UDB-131495	#25	UDB-134219	27/64
UDB-131562	5/32	UDB-134375	7/16
UDB-131590	#21	UDB-134531	29/64
UDB-131610	#20	UDB-134688	15/32
UDB-131719	11/64	UDB-134844	31/64
UDB-131770	#16	UDB-135000	1/2
UDB-131875	3/16	UDB-135156	33/64
UDB-131935	#10	UDB-135312	17/32
UDB-131990	#8	UDB-135625	9/16
UDB-132010	#7	UDB-135781	37/64
UDB-132031	13/64	UDB-135937	19/32
UDB-132040	#6	UDB-136250	5/8
UDB-132130	#3	UDB-136406	41/64
UDB-132187	7/32	UDB-136562	21/32
UDB-132344	15/64	UDB-136875	11/16
UDB-132500	1/4	UDB-137187	23/32
UDB-132570	F	UDB-137500	3/4
UDB-132656	17/64	UDB-137656	49/64
UDB-132720	I	UDB-137812	25/32
UDB-132812	9/32	UDB-138125	13/16
UDB-132968	19/64	UDB-138437	27/32
UDB-133125	5/16	UDB-138750	7/8
UDB-133230	P	UDB-139062	29/32
UDB-133281	21/64	UDB-139375	15/16
UDB-133320	Q	UDB-139687	31/32
UDB-133437	11/32	UDB-139999	1

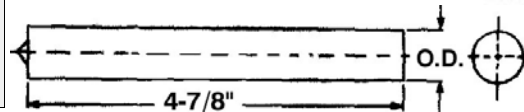
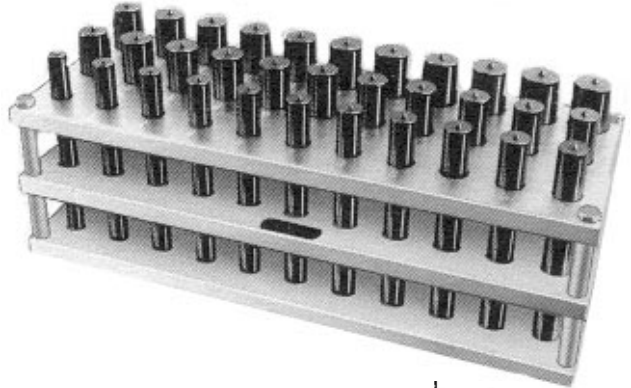
Transfer Punches and Sets

Transfer
Punches

TRANSFER PUNCHES



UDB-140326	A to Z — All letters of the alphabet in a handy stand. You can depend on <i>UNITED's</i> long wear Transfer Punches!
LETTER SET	
UDB-140328	28 Precision Punches 4-7/8" long with handy index stand. Sizes 3/32 to 1/2" by 1/64ths. Includes a useful 17/32 size! Tough tool steel, heat treated, ground and black oxide.
FRACTIONAL REGULAR SET	
UDB-140333	Super 33 piece set for the big ones! 1/2 thru 1" by 1/64ths. Most shop requirements are satisfied by this matched set.
FRACTIONAL SUPER SET	
UDB-140360	60 Piece set with sizes 1 thru 60. This precision matched complete set comes with a handy index stand. All punches are 4-7/8 long.
WIRE SET	



OIL HARDENED — LONG WEAR POINTS — PRECISION GROUND ACCURACY

Part Number	Size	Part Number	Size	Part Number	Size	Part Number	Size
UDB-140400	60	UDB-141440	27	UDB-142570	F	UDB-145469	35/64
UDB-140410	59	UDB-141470	26	UDB-142610	G	UDB-145625	9/16
UDB-140420	58	UDB-141495	25	UDB-142656	17/64	UDB-145781	37/64
UDB-140430	57	UDB-141520	24	UDB-142660	H	UDB-145937	19/32
UDB-140485	56	UDB-141540	23	UDB-142720	I	UDB-146094	39/64
UDB-140520	55	UDB-141562	5/32	UDB-142770	J	UDB-146250	5/8
UDB-140550	54	UDB-141570	22	UDB-142811	K	UDB-146408	41/64
UDB-140595	53	UDB-141590	21	UDB-142812	9/32	UDB-146562	21/32
UDB-140625	1/16	UDB-141610	20	UDB-142900	L	UDB-146719	43/64
UDB-140635	52	UDB-141660	19	UDB-142950	M	UDB-146875	11/16
UDB-140670	51	UDB-141695	18	UDB-142968	19/64	UDB-147031	45/64
UDB-140700	50	UDB-141719	11/64	UDB-143020	N	UDB-147187	23/32
UDB-140730	49	UDB-141730	17	UDB-143125	5/16	UDB-147344	47/64
UDB-140760	48	UDB-141770	16	UDB-143160	O	UDB-147500	3/4
UDB-140781	5/64	UDB-141800	15	UDB-143230	P	UDB-147656	49/64
UDB-140785	47	UDB-141820	14	UDB-143281	21/64	UDB-147812	25/32
UDB-140810	46	UDB-141850	13	UDB-143320	Q	UDB-147969	51/64
UDB-140820	45	UDB-141875	3/16	UDB-143390	R	UDB-148125	13/16
UDB-140860	44	UDB-141890	12	UDB-143437	11/32	UDB-148281	53/64
UDB-140890	43	UDB-141910	11	UDB-143480	S	UDB-148437	27/32
UDB-140935	42	UDB-141935	10	UDB-143580	T	UDB-148594	55/64
UDB-140937	3/32	UDB-141960	9	UDB-143594	23/64	UDB-148750	7/8
UDB-140960	41	UDB-141990	8	UDB-143680	U	UDB-148906	57/64
UDB-140980	40	UDB-142010	7	UDB-143750	3/8	UDB-149062	29/32
UDB-140995	39	UDB-142031	13/64	UDB-143770	V	UDB-149219	59/64
UDB-141015	38	UDB-142040	6	UDB-143860	W	UDB-149375	15/16
UDB-141040	37	UDB-142055	5	UDB-143906	25/64	UDB-149531	61/64
UDB-141065	36	UDB-142090	4	UDB-143970	X	UDB-149687	31/32
UDB-141093	7/64	UDB-142130	3	UDB-144040	Y	UDB-149844	63/64
UDB-141100	35	UDB-142187	7/32	UDB-144062	13/32	UDB-149991	1
UDB-141110	34	UDB-142210	2	UDB-144130	Z	UDB-149992	1-1/32
UDB-141130	33	UDB-142280	1	UDB-144219	27/64	UDB-149993	1-1/16
UDB-141160	32	UDB-142340	A	UDB-144375	7/16	UDB-149994	1-3/32
UDB-141200	31	UDB-142344	15/64	UDB-144531	29/64	UDB-149995	1-1/8
UDB-141250	1/8	UDB-142380	B	UDB-144687	15/32	UDB-149996	1-3/16
UDB-141285	30	UDB-142420	C	UDB-144843	31/64	UDB-149997	1-1/4
UDB-141360	29	UDB-142460	D	UDB-145000	1/2		
UDB-141405	28	UDB-142500	E	UDB-145156	33/64		
UDB-141406	9/64	UDB-142500	1/4	UDB-145312	17/32		

AVAILABLE UP TO 2"

Strap Duplicators Drill Stops

Duplicator Systems And Drill Stops

SPRING LOADED STRAP DUPLICATORS



Spring Loaded Strap Duplicator has a hardened marking pin that permits marking of sheet stock from a hidden pilot hole on the job. Bevelled edge on the handle permits prying sheets apart. Excellent for marking hard to reach areas.

CUSTOMER TO SPECIFY DRILL AND PILOT SIZE. Example: UDB-754880 #40

UNITED PART NO.	'D' DRILL & PILOT SIZE	L	UNITED PART NO.	'D' DRILL & PILOT	L
UDB-754880	#40	6-1/4	UDB-754882	#40	13-1/4
	#30			#30	
	#21			#21	
	#19			#19	
	#10			#10	
	#5			#5	
	'F'			'F'	
	1/4			1/4	

DRILL BUSHING STRAP DUPLICATORS



Aligns and accurately duplicates matching holes in overlapping sheets. Hole to be duplicated is drilled through bushing while pilot is in place.

CUSTOMER TO SPECIFY DRILL AND PILOT SIZE. Example: UDB-754886 1/4

UNITED PART NO.	'D' DRILL & PILOT SIZE	L	UNITED PART NO.	'D' DRILL & PILOT	L
UDB-754886	#40	6-1/4	UDB-754888	#40	13-1/4
	#30			#30	
	#21			#21	
	#19			#19	
	#10			#10	
	#5			#5	
	'F'			'F'	
	1/4			1/4	

DRILL BUSHING INVERTED PILOT STRAP DUPLICATORS

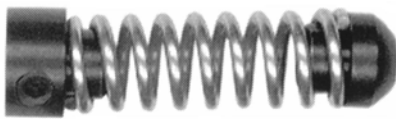


Pilot is inverted allowing hole duplication in places where the sheets cannot be pried apart.

CUSTOMER TO SPECIFY DRILL AND PILOT SIZE. Example: UDB-754890 'F'

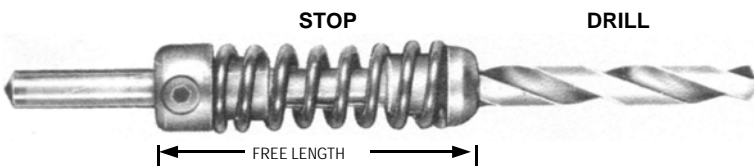
UNITED PART NO.	'D' DRILL & PILOT SIZE	L	UNITED PART NO.	'D' DRILL & PILOT	L
UDB-754890	#40	6-1/4	UDB-754892	#40	13-1/4
	#30			#30	
	#21			#21	
	#19			#19	
	#10			#10	
	#5			#5	
	'F'			'F'	
	1/4			1/4	

DRILL STOPS



REDUCES DRILL BREAKAGE

To absolutely prevent marring, use with Drill Guide Nosepieces on page C6.



The Stop locks on your drill with a set screw.

Designed to control hole depth. This tool will cushion the break-through of a drill. Prevents chuck jaws from contacting the skin surface.

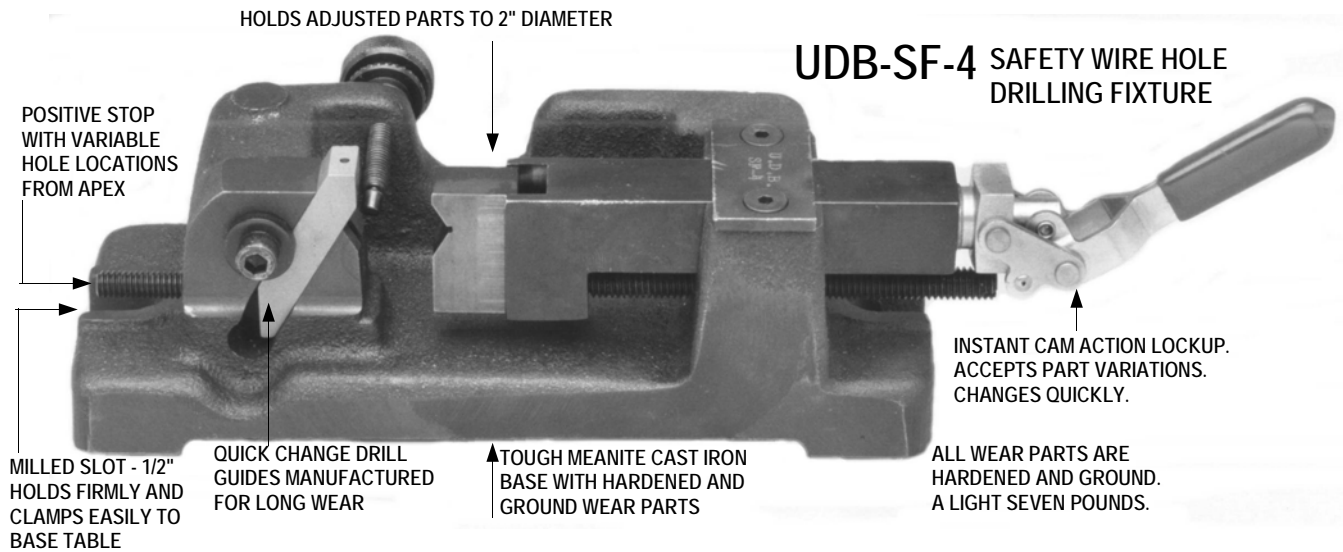
CUSTOMER TO SPECIFY BY PART NUMBER AND DRILL SIZE. Example: UDB-754915 #20

UNITED PART NO.	DRILL SIZE	FREE LENGTH
UDB-754915	#50	1-1/8
	#40	
	#30	
	#28	
	#21	1-3/8
	#20	
	#12	
	#11	
	#10	
	1/4	1-7/8
5/16		

Safety Wire Drilling Fixture

IDEAL FOR CROSS HOLES IN ROUND OR HEX STOCK—NUTS—BOLTS—SCREWS

Safety Wire Drilling



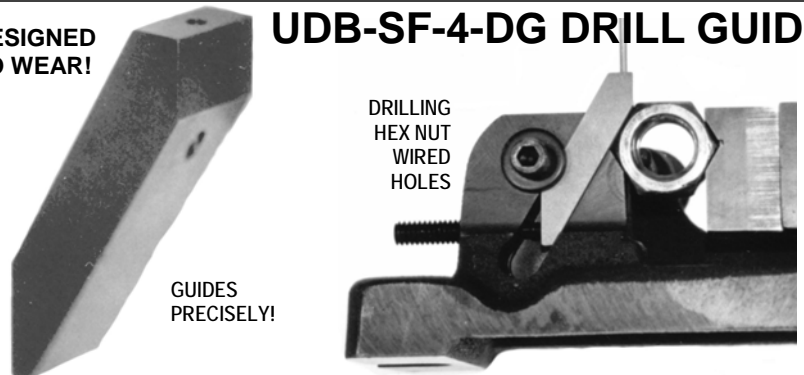
QUICK — ACCURATE — EASY TO USE — PRODUCTIVE — COST-EFFECTIVE!

Our highly accurate UDB-SF-4 FIXTURE secures Hex and Round Sections or Nuts by locking them in place. Eliminates vibrations or movements. Hexagon or Round can then be drilled in seconds repeatedly with greater accuracy than any competing fixtures. Once a hexagon or round is drilled, a Safety Wire may be inserted.

DRILL GUIDES HARDENED AND GROUND UNALLOY HS MATERIAL — ORDER SEPARATELY	
PART NO.	DRILL SIZE RANGE
UDB-SF-4-DG1	NO. 69 (.0292) THRU 3/64 (.0469)
UDB-SF-4-DG2	NO. 55 (.0520) THRU 1/16 (.0625)
UDB-SF-4-DG3	NO. 52 (.0635) THRU NO.39 (.0995)
UDB-SF-4-DG4	NO. 38 (.1015) THRU 1/8 (.1250)
UDB-SF-4-DG5	SPECIAL SIZES—SPECIFY

DESIGNED TO WEAR!

UDB-SF-4-DG DRILL GUIDE



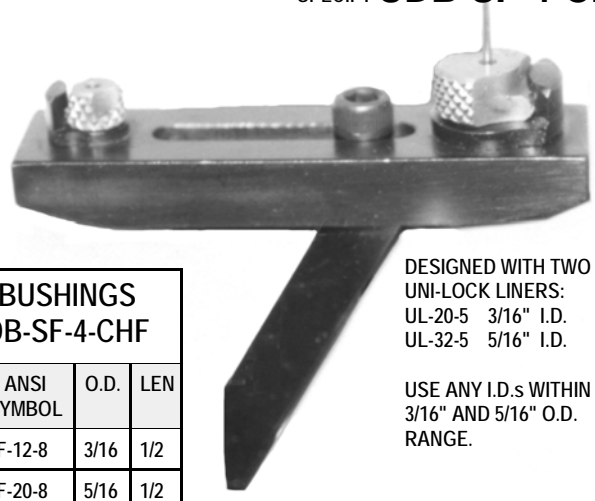
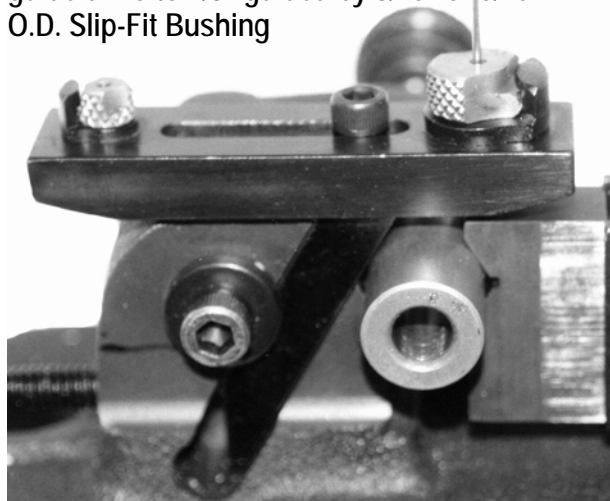
TO ORDER GUIDES, SPECIFY PART NO. AND SIZE.
EXAMPLE: **UDB-SF-4-DG2-55**

UDB-SF-4-CHF CROSS HOLE

Fixture drilling attachment designed to guide drills to 1/8" guided by 3/16" or 5/16" O.D. Slip-Fit Bushing

CROSS HOLE DRILL FIXTURE EXPANDS THE USE OF UNITED'S UDB-SF-4 FIXTURE.

SPECIFY **UDB-SF-4-CHF**



'SF' BUSHINGS FOR UDB-SF-4-CHF

I.D. RANGE	ANSI SYMBOL	O.D.	LEN
#80-39	SF-12-8	3/16	1/2
#80-16	SF-20-8	5/16	1/2

DESIGNED WITH TWO UNI-LOCK LINERS:
UL-20-5 3/16" I.D.
UL-32-5 5/16" I.D.

USE ANY I.D.s WITHIN 3/16" AND 5/16" O.D. RANGE.

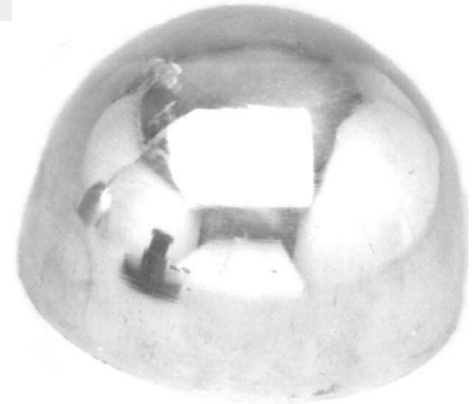
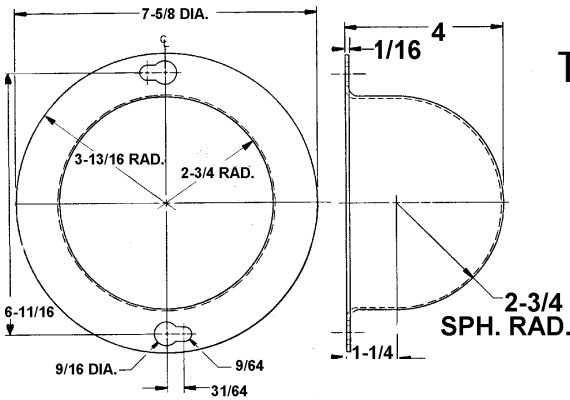
**Cup Mounts
That Last**

Adjustable Optical Mount

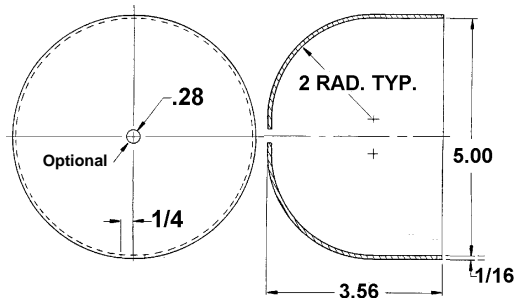
Base and Covers



UDB-530340-C BOLT-ON COVER



UDB-530350-C SNAP-ON COVER



Optical
Mount
Flange
Cover

Fasten or
Bolt-On
Cover

Optical
Mount
Plain
Cover

Pop-On or
Snap-On
Cover

**Tough Durable
Covers**

**Shield Your
Optical Cup
Mounts**

Hole and 1/4-20 x 4" Wing Stove Bolt are Optional with our Customer.

Assembly UDB-530302 - 1-1/2 - 24
includes
Adj. Bushing UDB-530324B
Optical Mount UDB-530324M

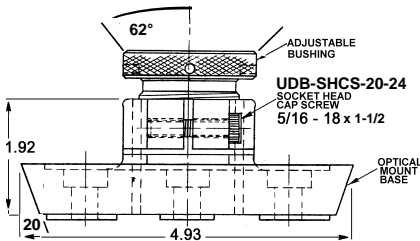
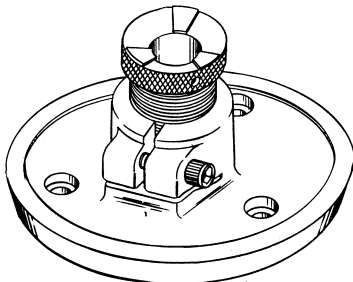
Assembly UDB-530301 - 1-5/8 - 16
includes
Adj. Bushing UDB-530326B
Optical Mount UDB-530326M

Telescope Mount Assembly

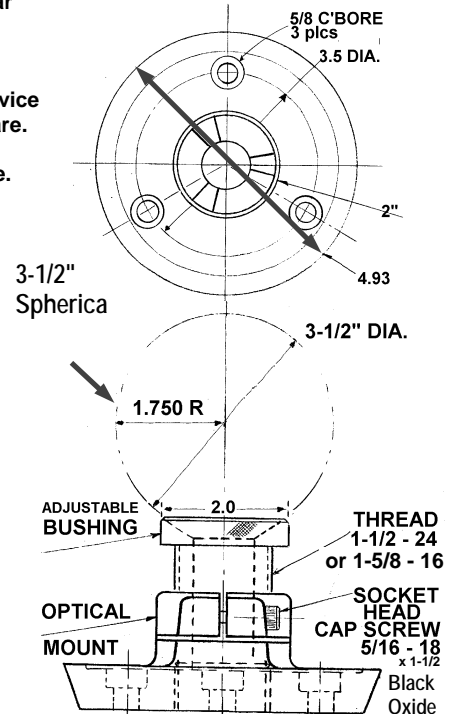
Manufactured to precise dimensions from solid bar
premium tool steel.
Hardened and pre-ground before threading.

These Precision Mounts will provide long lasting service
for as long as you will remember, if handled with care.

Bushings are adjustable and sized to fit each base.



Spherical Mounts on Top of *UNITED's*
Cup Mount. Held to .005 T.I.R.



Adjustable Optical Mount With Base

Steel Heat Treated - Manufactured from Solid to Cast

Long Travel Super Stop Drill Cage

**Micro-Controlled
Countersink Super Stop**

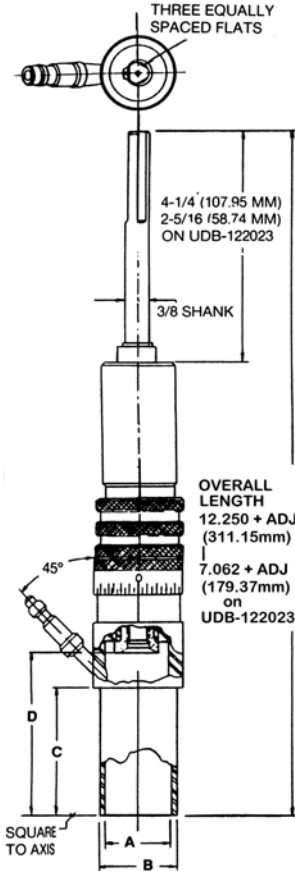
Micro-Controlled Countersink Super Stop Drill Cage is used for Drilling and Reaming.

Intended for use with Hand-held or Power-controlled Positive Feed Motors

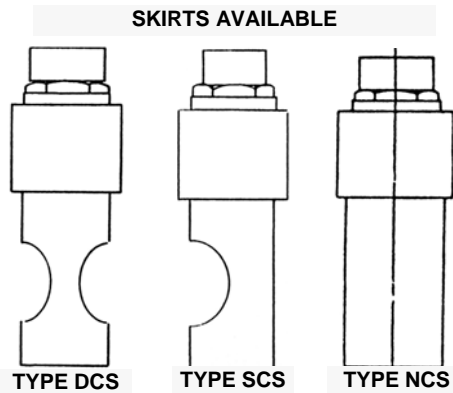
Each graduation increases or decreases the depth by .001.

Using UNITED's Super Stop:

- Place the Skirt Base against the structure to be drilled. Keep the foot or cage flat against the work piece to assure a straight hole.
- Pressure on the Micro-Stop is very important! Taper reaming requires a gentle lighter touch than straight drilling. Use less pressure when countersinking. Hold the power unit firm. Fluid pressure is light.
- After hole is completed, do not allow the Super Stop and cutter to dwell in the hole or instant over-size may occur! Wobbling may also produce over-sized holes. Withdraw while motor is running.

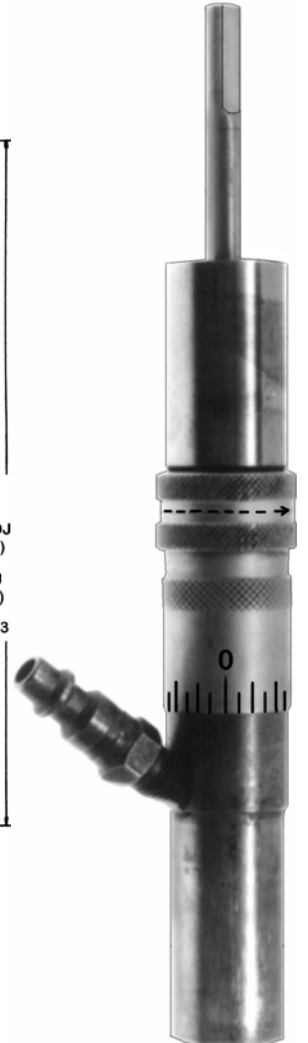


TYPE DCS



SKIRTS AVAILABLE WITH OR WITHOUT COOLANT NOZZLE.

TYPE NCS IS AVAILABLE WITH OR WITHOUT COOLANT.



TYPE NCS

MICRO-CONTROLLED COUNTERSINK SUPER STOPS

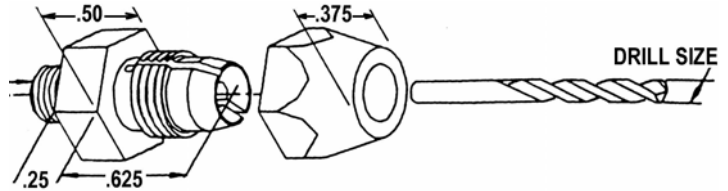
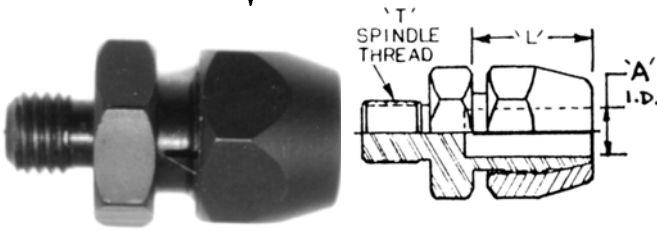
STANDARD FEATURES:

- Positive Stop adjustment
- .001" incremental Depth adjustment
- Ball bearing Depth Stop-Locked in place
- Spindle Roller Bearings widely spaced & locked
- Fully protected Threads
- Threaded Spindle for Taper Lock Cutters
- Positive adjustment Lock
- Standard 3 Flat Non-Slip Shank
- Skirts with or without coolant nozzle

COOLANT ASSEMBLY PART NO.	TO ORDER WITHOUT COOLANT	NOM. FASTENER SIZE	A DIA		B DIA		C LENGTH		D LENGTH		T SPINDLE THREAD	SHAFT TRAVEL		REF.
			INCH	MM	INCH	MM	INCH	MM	INCH	MM				
UDB-122023	UDB-122013	5/32, 3/16	.647	16.434	.8745 8742	22.2123 22.2046	1.750	44.450	2.375	60.325	1.4"-28	1-1/2	38.100	TLA-4901-24, IE-12-201-3
UDB-122024	UDB-122014	1/4	.835	21.209	.9995 .9992	23.3873 23.3796	2.250	57.150	3.030	76.962	7/16-20	2-3/8	60.325	TLA-4901-38, IE-12-201-4
UDB-122026	UDB-122016	1/4, 5/16, 3/8	1.085	27.559	1.2495 1.2492	31.7373 31.7296	2.250	57.150	3.030	76.962	7/16-20	2-3/8	60.325	TLA-4901-38, IE-12-201-6
UDB-122027	UDB-122017	7/16	1.335	33.909	1.4995 1.4992	38.0873 38.0797	3.250	82.550	4.030	102.362	7/16-20	2-3/8	60.325	TLA-4901-24, IE-12-201-7
UDB-122028	UDB-122018	1/2	1.495	37.973	1.7495 1.7492	44.4373 44.4297	3.250	82.550	4.030	102.362	7/16-20	2-3/8	60.325	TLA-4901-24, IE-12-201-8

Collet Chucks & Drill Adapters

Threaded Collets and Adapters



UNITED's Precision Collet Chuck

- Easy to Use
- Saves Time
- Increases Drill Life

COLLET CHUCKS

THREAD SIZES FOR MOST ANGLE DRILLS

Accurate bore assures concentricity.

Hex Nut tightens quickly and provides positive firm grip on drills.

Locks securely and eliminates costly threaded shank drills.

Special drill sizes available on request.

ALLOY STEEL - HEAT TREATED - BLACK OXIDE FINISH

PART NO.	A I.D.	T SPINDLE THREAD	L	REF 1	REF 2
UDB-626550	1/16 to 3/16	10-32	7/16	ZT41D	1254
UDB-626555	1/16 to 'F'	1/4-28	9/16	ZT41C	1255
UDB-626560	1/16 to 5/16	5/16-24	11/16	ZT41B	1256

TO ORDER, SPECIFY PART NO. AND DRILL SIZE.

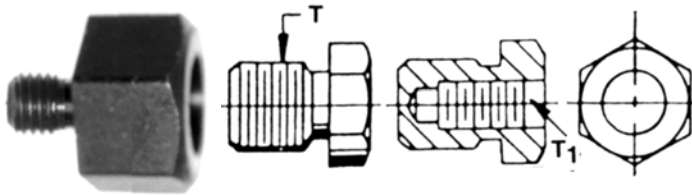
Example: **UDB-626555 - 1/4"**

FOR THREADED SHANK DRILLS

DRILL ADAPTERS

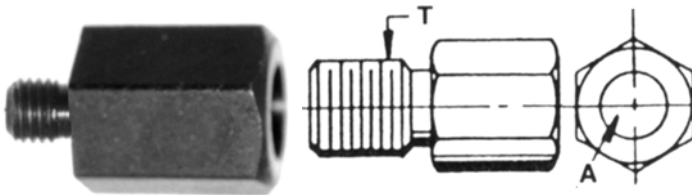
TO ORDER, ADD SUFFIX **S** TO PART NO.

AVAILABLE AS SOLID BLANKS



PART NO.	T OUTSIDE THREAD	T1 INSIDE THREAD	PART NO.	T OUTSIDE THREAD	T1 INSIDE THREAD
UDB-626610	1/4-28	3-48	UDB-626620	10-32	3-48
UDB-626612	1/4-28	5-40	UDB-626622	10-32	5-40
UDB-626614	1/4-28	6-32	UDB-626624	10-32	6-32
UDB-626616	1/4-28	8-32	UDB-626626	10-32	8-32
UDB-626618	1/4-28	10-32			

FOR PLAIN SHANK DRILLS - SOLDER IN TYPE

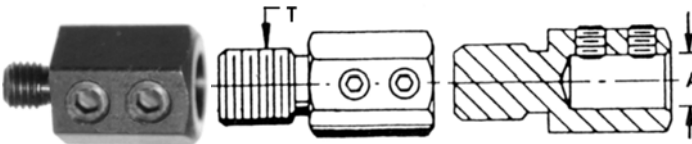


PART NO.	T SPINDLE THREAD	A I.D.	PART NO.	T SPINDLE THREAD	A I.D.
UDB-626630	1/4-28	#51 (.067)	UDB-626646	10-32	#40 (.098)
UDB-626632	1/4-28	#50 (.070)	UDB-626648	10-32	#30 (.1285)
UDB-626634	1/4-28	#40 (.098)	UDB-626650	10-32	#21 (.159)
UDB-626636	1/4-28	#30 (.1285)	UDB-626652	10-32	#20 (.161)
UDB-626638	1/4-28	#21 (.159)	UDB-626654	10-32	#11 (.191)
UDB-626640	1/4-28	#20 (.161)	UDB-626656	10-32	#10 (.1935)
UDB-626642	1/4-28	#11 (.191)	UDB-626658	10-32	1/4 (.250)
UDB-626644	1/4-28	#10 (.1935)	UDB-626660	10-32	'F' (.257)

SPECIAL I.D.s are available on request.

FOR PLAIN SHANK DRILLS - SET SCREW TYPE

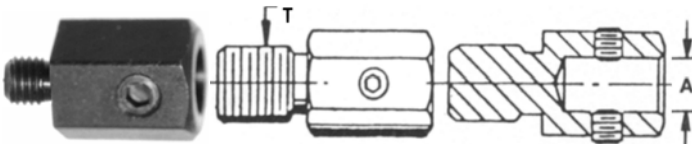
5/16-24 THREAD - 2 SET SCREWS - SAME SIDE



PART NO.	T SPINDLE THREAD	A I.D.	PART NO.	T SPINDLE THREAD	A I.D.
UDB-626710	5/16-24	#40 (.098)	UDB-626736	1/4-28	'F' (.257)
UDB-626712	5/16-24	#30 (.1285)	UDB-626738	1/4-28	5/16 (.3125)
UDB-626714	5/16-24	#21 (.159)	UDB-626740	1/4-28	'O' (.316)
UDB-626716	5/16-24	#20 (.161)	UDB-626742	1/4-28	3/8 (.375)
UDB-626718	5/16-24	#11 (.191)	UDB-626744	1/4-28	'V' (.377)
UDB-626720	5/16-24	#10 (.1935)	UDB-626746	1/4-28	7/16 (.4375)
UDB-626722	1/4-28	#40 (.098)	UDB-626748	1/4-28	1/2 (.500)
UDB-626724	1/4-28	#30 (.1285)	UDB-626750	10-32	#40 (.098)
UDB-626726	1/4-28	#21 (.159)	UDB-626752	10-32	#30 (.1285)
UDB-626728	1/4-28	#20 (.161)	UDB-626754	10-32	#21 (.159)
UDB-626730	1/4-28	#11 (.191)	UDB-626756	10-32	#20 (.161)
UDB-626732	1/4-28	#10 (.1935)	UDB-626758	10-32	#10 (.1935)
UDB-626734	1/4-28	1/4 (.250)			

FOR PLAIN SHANK DRILLS - SET SCREW TYPE

1/4-28 and 10-32 THREADS
2 SET SCREWS - OPPOSITE SIDES



ALLOY STEEL - HEAT TREATED - BLACK OXIDE FINISH

M8

UNITED—For All Your Automotive and Aircraft Tools!

5-4-00

Float Your Reamers

Use of Flexible Drivers maintains concentricity and eliminates irregular holes.

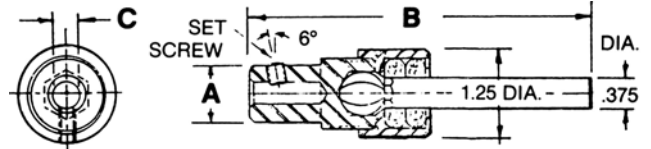
Flexible Drivers

FOR CYLINDRICAL SHANK TOOLS WITH 6° ANGULAR FLAT

UNITED ASSEMBLY PART NO.	DIAMETER		LENGTH B
	A	C	
UDB-749513	.75	.154	4.25
UDB-749017	.75	.187	4.25
UDB-749307	.75	.190	4.25
UDB-749021	.75	.250	4.25
UDB-749313	.75	.266	4.25
UDB-749309	.75	.313	4.25
UDB-749020	.75	.375	4.25
UDB-749003	1.00	.437	4.75
UDB-749005	1.00	.500	4.75

Use with taper pin reamers, single flute reamers and 60° chamfering cutters.

Use with piloted taper pin reamers, combination Taper Lock Drill reamers and piloted core drills.



FLEXIBLE DRIVER TYPE I

FOR THREADED SHANK TOOLS

DRIVER ONLY PART NO.	T THREAD	A DIA.	B LENGTH	S SQUARE DRIVE	ASSEMBLY PART NO. WITH SHANK	
					WITH SHORT SHANK	WITH LONG SHANK
UDB-749701	1/4-28	.75	1.50	.375	UDB-749101	UDB-749201
UDB-749703	5/16-24	.75	1.50	.375	UDB-749103	UDB-749203
UDB-749709	5/16-24	1.00	2.50	.500	UDB-749109	UDB-749209
UDB-749705	7/16-20	.75	1.50	.375	UDB-749105	UDB-749205
UDB-749711	7/16-20	1.00	2.50	.500	UDB-749111	UDB-749211
UDB-749707	5/8-18	.87	1.63	.375	UDB-749107	UDB-749207
UDB-749713	5/8-18	1.00	2.80	.500	UDB-749113	UDB-749213
UDB-749715	1"-14	1.38	3.50	.500	UDB-749115	UDB-749215

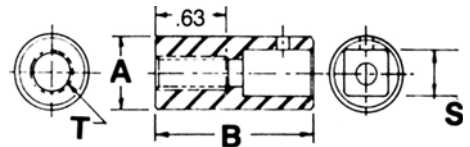
FLEXIBLE DRIVER TYPE II

SQUARE DRIVE

ALLOY STEEL
HEAT TREATED
BLACK OXIDE FINISH



USE WITH FLEX DRIVER SHANKS.



FOR CYLINDRICAL SHANK TOOLS

DRIVER ONLY PART NO.	A DIA.	C DIA.	B LENGTH	S SQUARE DRIVE	ASSEMBLY PART NO. WITH SHANK	
					WITH SHORT SHANK	WITH LONG SHANK
UDB-749601	.75	.2031	1.50	.375	UDB-749301	UDB-749401
UDB-749603	.75	.2344	1.50	.375	UDB-749303	UDB-749403
UDB-749605	.75	.3125	1.50	.375	UDB-749305	UDB-749405
UDB-749607	.75	.3594	1.50	.375	UDB-749307A	UDB-749407
UDB-749609	.75	.4062	1.50	.375	UDB-749309A	UDB-749409
UDB-749611	.75	.4375	1.50	.375	UDB-749311	UDB-749411
UDB-749615	.87	.4375	1.50	.500	UDB-749315	UDB-749415
UDB-749613	.87	.5000	1.63	.375	UDB-749313A	UDB-749413
UDB-749617	.87	.5000	1.63	.500	UDB-749317	UDB-749417
UDB-749619	.87	.5625	1.63	.500	UDB-749319	UDB-749419
UDB-749621	1.00	.6250	1.75	.500	UDB-749321	UDB-749421

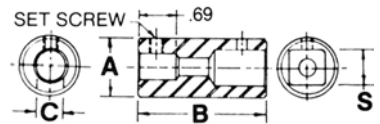
FLEXIBLE DRIVER TYPE III

SQUARE DRIVE

USE WITH FLEX DRIVER SHANKS.

ALLOY STEEL
HEAT TREATED
BLACK OXIDE
FINISH

SET SCREW
FURNISHED



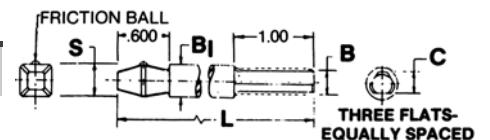
SHANKS FOR TYPES II & III FLEXIBLE DRIVERS

UNITED PART NO.	S DRIVE	B DIA.	C DIM. FLAT	B ₁ DIA.	L LENGTH
UDB-749601	.375	.375	.355	.410	2.00
UDB-749603	.375	.375	.355	.410	8.00
UDB-749605	.500	.500	.485	.530	2.00
UDB-749607	.500	.500	.485	.530	8.00

USE WITH TYPES II AND III.

ALLOY STEEL
HEAT TREATED
BLACK OXIDE
FINISH

FLEXIBLE DRIVER SHANKS



ASSEMBLY VIEW - Flexible Driver Type III and Shank

