

**Levers
Heavy and Medium Duty**

Heavy Duty and Medium Duty Levers

HEAVY DUTY LEVERS

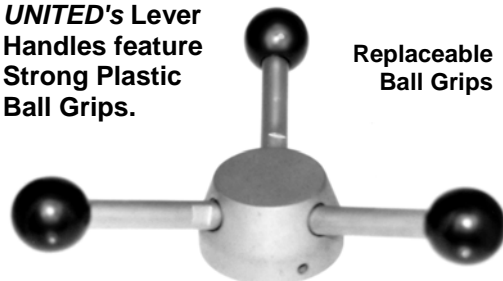
Fast — Efficient — Great Clamping Force!



SINGLE HANDLE

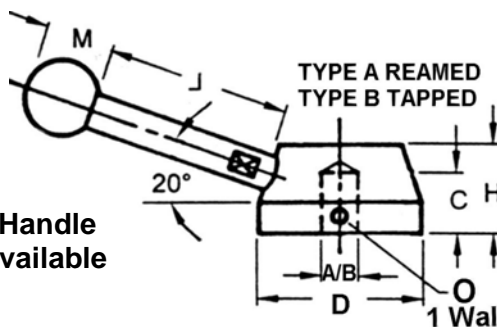
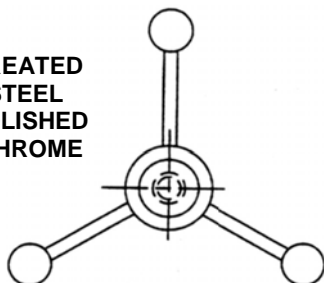
UNITED's Lever Handles feature Strong Plastic Ball Grips.

Replaceable Ball Grips



TRIPLE HANDLE

HEAT TREATED ALLOY STEEL WITH POLISHED SATIN CHROME FINISH



Custom Handle lengths available

ALLOY STEEL WITH POLISHED SATIN CHROME FINISH

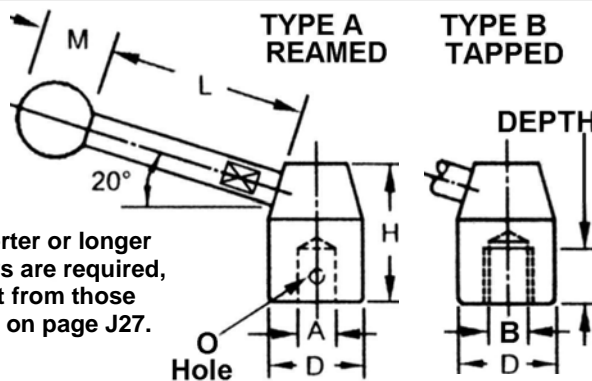
UNITED SINGLE HANDLE	UNITED TRIPLE HANDLE	TYPE A REAMED	TYPE B TAPPED	C DEPTH of TAP/REAM	D BASE DIA	H HT.	L LEN HANDLE	M DIA BALL	O HOLE 1 WALL
UCC-942011	UCC-942012	5/16	5/16-18	5/8	1-9/16	7/8	1.8	15/16	1/8
UCC-942013	UCC-942014						1.8		
UCC-942015	UCC-942016						3.0		
UCC-942017	UCC-942018						3.0		
UCC-942019	UCC-942020						4.0		
UCC-942021	UCC-942022						4.0		
UCC-942027	UCC-942028	3/8	3/8 - 16	3/4	2"	1"	2.0	1"	3/16
UCC-942029	UCC-942030						2.0		
UCC-942031	UCC-942032						3.2		
UCC-942033	UCC-942034						3.2		
UCC-942035	UCC-942036						4.7		
UCC-942037	UCC-942038						4.7		
UCC-942043	UCC-942044	1/2	1/2 - 13	7/8	2-3/8	1-3/16	3.7	19/32	3/16
UCC-942045	UCC-942046						3.7		
UCC-942047	UCC-942048						4.7		
UCC-942049	UCC-942050						4.7		
UCC-942051	UCC-942052						5.7		
UCC-942053	UCC-942054						5.7		

MEDIUM DUTY LEVER



Replaceable Ball Grips

REAMED or TAPPED SIZES



If shorter or longer Levers are required, select from those listed on page J27.

**ALLOY STEEL
POLISHED
CHROME
PLATED**

AVAILABLE WITH BLACK OXIDE

Add 'B' to Part No. for Black Oxide

UNITED SINGLE HANDLE	UNITED TRIPLE HANDLE	TYPE A REAMED x DEPTH	TYPE B TAPPED x DEPTH	D	H	L LEN HANDLE	M DIA BALL	O HOLE 1 WALL
UCC-942061	UCC-942062	3/8 x	1/2-13 x	1"	1-1/2	1.5	15/16	1/8
UCC-942063	UCC-942064	5/8 DEEP	9/16 DEEP			2.2		
UCC-942065	UCC-942066					3.0		
UCC-942071	UCC-942072	1/2 x	5/8-11 x	1-1/4	1-7/8	3.2	1-1/8	5/32
UCC-942073	UCC-942074	3/4 DEEP	11/16 DEEP			3.7		
UCC-942075	UCC-942076					4.7		
UCC-942081	UCC-942082	5/8 x	3/4-10 x	1-9/16	2-3/8	3.7	1-1/2	3/16
UCC-942083	UCC-942084	1" DEEP	7/8 DEEP			4.4		
UCC-942085	UCC-942086					6.4		

All-Use Medium Clamping Force Lever has Sturdy Plastic Ball Grip on the Handle for fast, efficient applications with Reamed or Tapped sizes.

Heavy Duty Adjustable Tension Levers



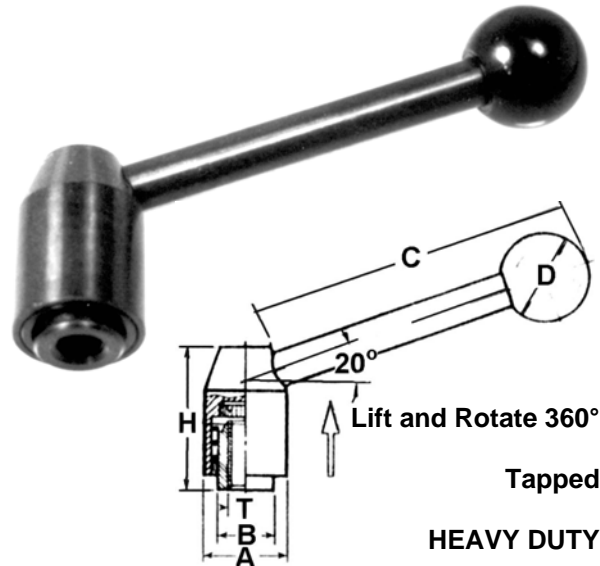
HEAVY DUTY QUALITY ADJUSTABLE TENSION LEVERS

Lift and Rotate 360°
Heavy Duty Clamping Levers.

TAPPED
BLACK PHENOLIC PLASTIC BALL GRIP
STEEL — HEAT TREATED — BLACK OXIDE FINISH
STAINLESS AVAILABLE ON REQUEST.

USA INCH UNITED PART NO.	T THD SIZE	A HUB O.D.	B RATCHET O.D.	C HANDLE LEN	D BALL DIA	H HUB LEN
UCC-942100	1/4-20	.83	.53	2.76	.79	1.32
UCC-942102	5/16-18	.83	.53	2.76	.79	1.32
UCC-942104	3/8-16	.94	.63	3.78	.98	1.57
UCC-942106	1/2-13	1.30	.91	4.88	1.26	2.17
UCC-942108	5/8-11	1.57	1.18	5.43	1.38	2.68
UCC-942110	3/4-10	1.57	1.10	5.43	1.38	2.68

METRIC UNITED PART NO.	T THD SIZE	A HUB O.D.	B RATCHET O.D.	C HANDLE LEN	D BALL DIA	H HUB LEN
UCC-942114	M6 x 1.0	21	13.5	70	20	33.5
UCC-942116	M8 x 1.25	21	13.5	70	20	33.5
UCC-942118	M10 x 1.50	24	16	96	25	40
UCC-942120	M12 x 1.75	28	19	110	30	48.5
UCC-942122	M16 x 2.0	33	23	124	32	55
UCC-942124	M20 x 2.50	40	28	138	35	68



UNITED QUALITY TENSION LEVERS allow for increased torque requirements.

Ideal when parts are clamped in confined spaces.

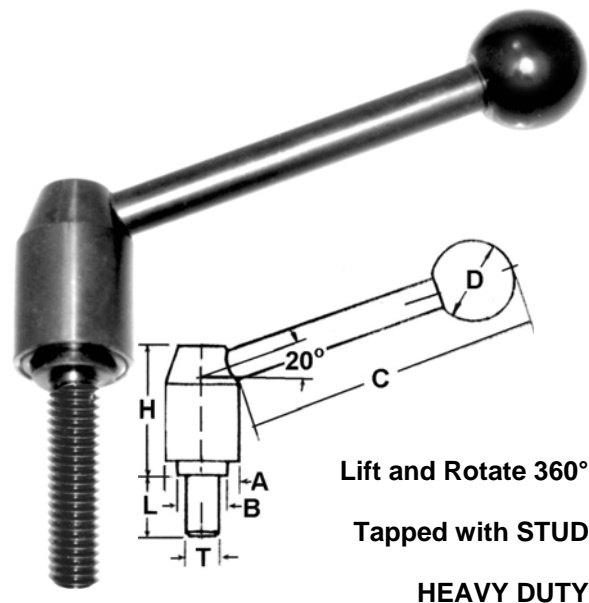
Lift and Rotate same as Clamping Levers.

HEAVY DUTY QUALITY ADJUSTABLE TENSION LEVERS WITH STUDS

STUD
BLACK PHENOLIC PLASTIC BALL GRIP
STEEL — HEAT TREATED — BLACK OXIDE FINISH
STAINLESS AVAILABLE ON REQUEST.

USA INCH UNITED PART NO.	T THD SIZE	L STUD LENGTH	A HUB O.D.	B RATCHET O.D.	C HANDLE LEN	D BALL DIA	H HUB LEN
UCC-942128	1/4-20	.99	.83	.53	2.76	.79	1.32
UCC-942130	5/16-18	1.26	.83	.53	2.76	.79	1.32
UCC-942132	3/8-16	1.26	.83	.53	2.76	.79	1.32
UCC-942134	1/2-13	1.26	1.10	.75	3.78	1.18	1.90
UCC-942136	1/2-13	1.97	1.10	.75	3.78	1.18	1.90
UCC-942138	5/8-11	1.26	1.30	.91	4.88	1.26	2.17
UCC-942140	5/8-11	2.48	1.30	.91	4.88	1.26	2.17
UCC-942142	3/4-10	2.48	1.30	.91	4.88	1.26	2.17

METRIC UNITED PART NO.	T THD SIZE	L STUD LENG	A HUB O.D.	B RATCHET O.D.	C HANDLE LEN	D BALL DIA	H HUB LEN
UCC-942146	M6 x 1.0	40	21	13.5	70	20	33.5
UCC-942148	M8 x 1.25	40	21	13.5	70	20	33.5
UCC-942150	M10 x 1.50	40	24	16	96	25	40
UCC-942152	M12 x 1.75	50	28	19	110	30	48.5
UCC-942154	M16 x 2.0	50	33	23	124	32	55
UCC-942156	M20 x 2.50	50	40	28	138	35	68

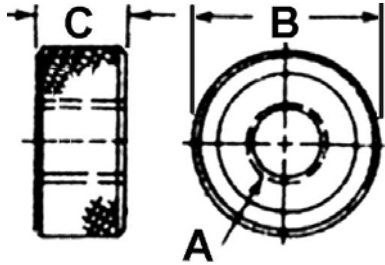


UNITED QUALITY TENSION LEVERS are HEAVY DUTY allowing for increased torque requirements.

Steel Knobs

Knurled 12L14 Steel & Stainless Adjusting, Lock & Check Knobs

KNURLED STEEL ADJUSTING KNOBS



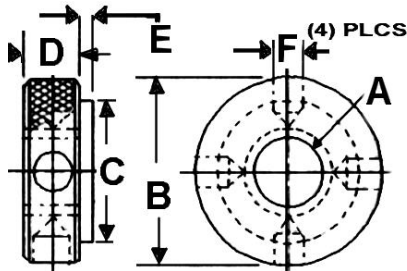
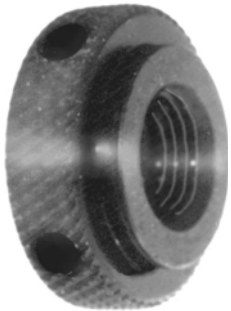
KNURLED ADJUSTING KNOBS fit most popular threads and all **UNITED** Knurled Knob Spindles.

SOLDER, WELD or BOND LOCTITE® to your **SCREWS**.

12L14 STEEL — BLACK OXIDE

STEEL PART NO.	A THD	B	C
UCC-955200	10-24	3/4	1/4
UCC-955202	1/4-20	7/8	5/16
UCC-955204	1/4-20	1"	5/16
UCC-955206	1/4-20	1"	3/8
UCC-955208	5/16-18	7/8	5/16
UCC-955210	5/16-18	1-1/8	3/8
UCC-955212	5/16-18	1-1/8	7/16
UCC-955214	3/8 - 16	1"	3/8
UCC-955216	3/8 - 16	1-1/4	3/8
UCC-955218	3/8 - 16	1-1/4	7/16
UCC-955220	3/8 - 16	1-1/4	1/2
UCC-955222	1/2-13	1"	3/8
UCC-955224	1/2-13	1-1/4	1/2
UCC-955226	1/2-13	1-1/4	9/16
UCC-955228	5/8-11	1-1/4	1/2

STEEL and STAINLESS KNURLED LOCK KNOBS



UNITED HEAVY DUTY KNURLED LOCK KNOBS are quick acting for tightening professionally.

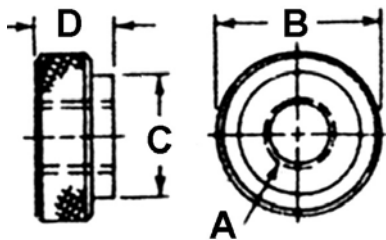
Can be tightened by hand or with a 1/4" or 6mm diameter rod.

300 SERIES
STAINLESS
WITH PASSIVATED FINISH

12L14 STEEL

12L14 STEEL PART NO.	STAINLESS PART NO. 300 SS	A THD I. D. SIZE	B O. D. DIA	C STEP DIA	D WIDTH	E LIP	F DIA +.005 -.000
UDB-925110	UDB-925110S	1/4-20	1-1/8	1"	7/16	1/16	.250
UDB-925115	UDB-925115S	3/8 - 16	1-1/8	1"	7/16	1/16	.250
UDB-925120	UDB-925120S	1/2-13	1-1/8	1"	7/16	1/16	.250
UDB-925125	UDB-925125S	5/8-11	1-3/8	1"	7/16	1/16	.250

KNURLED 12L14 STEEL and STAINLESS SCREW KNOBS



UNITED SCREW KNOBS are fixture tightening good! They are provided with all Toggle Head Screws. They are available for numerous standard and special applications.

300 SERIES STAINLESS HAVE PASSIVATED FINISH.
12L14 STEEL WITH BLACK OXIDE FINISH.

12L14 STEEL PART NO.	STAINLESS PART NO. 300 SS	A THD SIZE	B DIA	C DIA	D
UDB-955100	UDB-955100S	#10-32	3/4	7/16	3/16
UDB-955103	UDB-955103S	#10-24	3/4	7/16	3/16
UDB-955105	UDB-955105S	1/4-20	3/4	1/2	7/32
UDB-955110	UDB-955110S	5/16-18	3/4	1/2	1/4
UDB-955115	UDB-955115S	3/8 - 16	1"	3/4	7/16
UDB-955120	UDB-955120S	1/2-13	1"	3/4	7/16
UDB-955125	UDB-955125S	5/8-11	1-1/16	13/16	1/2

4-Prong Hand Knobs Aluminum

Aluminum light weight long lasting fine finish
tumbled clear anodized

Special Colors Available on request:

Blue Clear
Gold Black

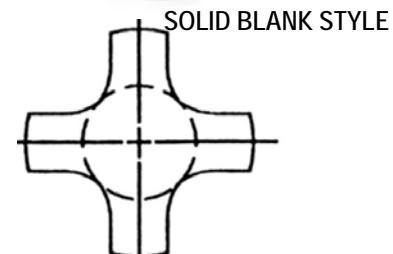
UNITED PART NO.	A HANDLE DIA	B HD OAL LENGTH	C HUB DIA	D HUB LEN	E HOLE CONDITION
UCC-921000	1	7/8	1/2	1/2	SOLID BLANK
UCC-921001	1	7/8	1/2	1/2	1/4-20 TAP
UCC-921002	1	7/8	1/2	1/2	1/4-20 THRU HOLE
UCC-921003	1	7/8	1/2	1/2	1/4 REAM
UCC-921004	1-1/2	7/8	5/8	3/8	SOLID BLANK
UCC-921005	1-1/2	7/8	5/8	3/8	5/16-18 TAP
UCC-921006	1-1/2	7/8	5/8	3/8	5/16-18 THRU HOLE
UCC-921007	1-1/2	7/8	5/8	3/8	5/16 REAM
UCC-921008	2"	1"	13/16	1/2	SOLID BLANK
UCC-921009	2"	1"	13/16	1/2	3/8 - 16 TAP
UCC-921010	2"	1"	13/16	1/2	3/8 - 16 THRU HOLE
UCC-921011	2"	1"	13/16	1/2	3/8 REAM
UCC-921012	2-1/2	1-1/8	1"	9/16	SOLID BLANK
UCC-921013	2-1/2	1-1/8	1"	9/16	1/2-13 TAP
UCC-921014	2-1/2	1-1/8	1"	9/16	1/2-13 THRU HOLE
UCC-921015	2-1/2	1-1/8	1"	9/16	1/2 REAM
UCC-921016	3"	1-1/4	1-1/4	5/8	SOLID BLANK
UCC-921017	3"	1-1/4	1-1/4	5/8	5/8-11 TAP
UCC-921018	3"	1-1/4	1-1/4	5/8	5/8-11 THRU HOLE
UCC-921019	3"	1-1/4	1-1/4	5/8	5/8 REAM



ALUMINUM 4-PRONG HAND KNOBS

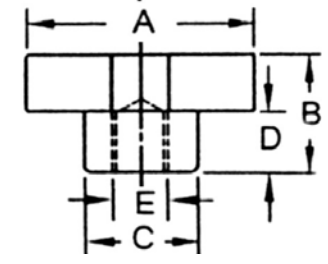


LIGHT WEIGHT
YET STRONG
EASY-TURNING
UNITED 4-PRONG
HAND KNOBS



Quick Action

Tighten
professionally.



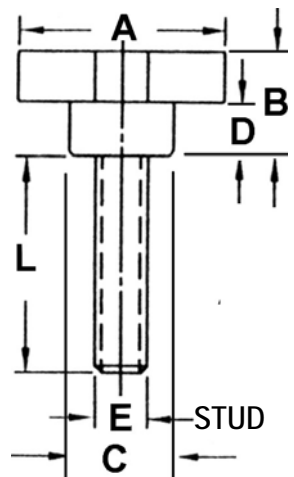
Aluminum Tumbled
Clear Anodized

ALUMINUM 4-PRONG STUD HAND KNOBS

Aluminum light weight long lasting fine finish
tumbled clear anodized

UNITED PART NO. WITH STUD	A HANDLE DIA	B HD OAL LENGTH	C HUB DIA	D HUB LEN	E STUD THREAD	L STUD LEN
UCC-921024	1"	7/8	1/2	1/2	1/4-20	1-3/4
UCC-921026	1"	7/8	1/2	1/2	1/4-20	2-1/2
UCC-921028	1"	7/8	1/2	1/2	1/4-20	3"
UCC-921030	1-1/2	7/8	5/8	3/8	5/16-18	1-3/4
UCC-921032	1-1/2	7/8	5/8	3/8	5/16-18	2-1/2
UCC-921034	1-1/2	7/8	5/8	3/8	5/16-18	3"
UCC-921036	2"	1"	13/16	1/2	3/8 - 16	1-3/4
UCC-921038	2"	1"	13/16	1/2	3/8 - 16	2-1/2
UCC-921040	2"	1"	13/16	1/2	3/8 - 16	3"
UCC-921044	2-1/2	1-1/8	1"	9/16	1/2-13	1-3/4
UCC-921046	2-1/2	1-1/8	1"	9/16	1/2-13	2-1/2
UCC-921048	2-1/2	1-1/8	1"	9/16	1/2-13	3"
UCC-921054	3"	1-1/4	1-1/4	5/8	5/8-11	1-3/4
UCC-921056	3"	1-1/4	1-1/4	5/8	5/8-11	2-1/2
UCC-921058	3"	1-1/4	1-1/4	5/8	5/8-11	3"

STRONG and
DURABLE
LONG LASTING
HAND KNOBS



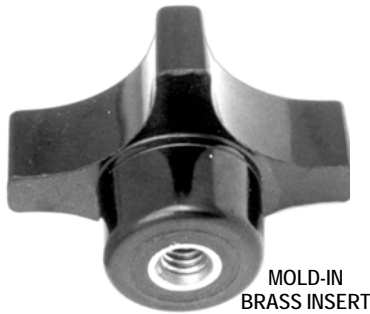
STRONG STUD
THRU HOLE STYLE
LIGHT WEIGHT YET HEAVY DUTY

**Phenolic Plastic
4-Prong Knobs**

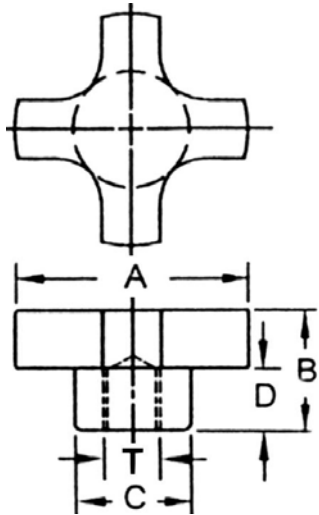
4-Prong Hand Knobs Phenolic Plastic

PHENOLIC PLASTIC 4-PRONG HAND KNOBS

Light weight — Long lasting — Fine finish



UNITED's
LIGHT WEIGHT YET STRONG
EASY-TURNING
4-PRONG HAND KNOBS
MOLD-IN BRASS INSERTS



The BEST and MOST
WIDELY USED on
Instrument and
Machine Tool
Adjusting Devices.

Quick Action
and Tightening.

UNITED PART NO.	A HANDLE DIA	B HD OAL LEN	C HUB DIA	D HUB LEN	T THREAD	TAP DEPTH
UCC-945410	1-1/4	7/8	5/8	3/8	10-32	TAP THRU
UCC-945412	1-1/4	7/8	5/8	3/8	10-32	.500 DEEP
UCC-945414	1-1/4	7/8	5/8	3/8	10-24	TAP THRU
UCC-945416	1-1/4	7/8	5/8	3/8	10-24	.500 DEEP
UCC-945418	1-3/4	1"	13/16	1/2	1/4-20	TAP THRU
UCC-945420	1-3/4	1"	13/16	1/2	1/4-20	.500 DEEP
UCC-945422	1-3/4	1"	13/16	1/2	5/16-18	TAP THRU
UCC-945424	1-3/4	1"	13/16	1/2	5/16-18	.500 DEEP
UCC-945426	2-1/4	1-1/8	1"	9/16	3/8 - 16	TAP THRU
UCC-945428	2-1/4	1-1/8	1"	9/16	3/8 - 16	.625 DEEP
UCC-945430	2-1/4	1-1/8	1"	9/16	1/2-13	TAP THRU
UCC-945432	2-1/4	1-1/8	1"	9/16	1/2-13	.625 DEEP

BLACK PHENOLIC PLASTIC KNOBS with BRASS INSERTS PROVIDE HIGH TORQUE TIGHTENING.

PHENOLIC PLASTIC 4-PRONG HAND KNOBS with STUDS

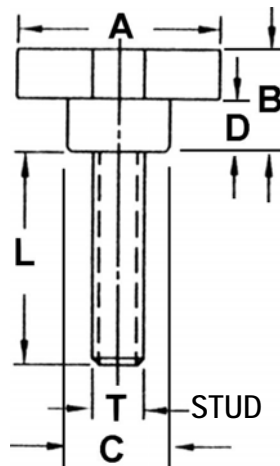
MOLD-IN BRASS INSERTS

Light weight — Long lasting — Fine finish



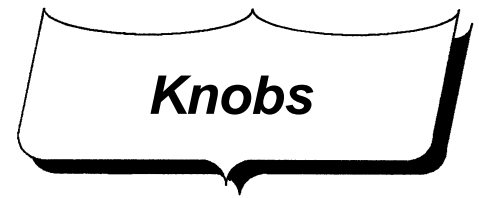
LIGHT WEIGHT YET
GREAT STRENGTH

STRONG and
DURABLE
LONG LASTING
HAND KNOBS
and STUDS



UNITED PART NO.	A HANDLE DIA	B HD OAL LEN	C HUB DIA	D HUB LEN	T STUD THREAD	L STUD LEN
UCC-945440	1-1/4	7/8	5/8	3/8	10-32	3/4
UCC-945442	1-1/4	7/8	5/8	3/8	10-24	3/4
UCC-945444	1-3/4	7/8	5/8	3/8	1/4-20	1"
UCC-945446	1-3/4	1"	13/16	1/2	5/16-18	1"
UCC-945448						1-1/2
UCC-945450						2"
UCC-945452	2-1/4	1-1/8	1"	9/16	3/8 - 16	1"
UCC-945454						1-1/2
UCC-945456						2"
UCC-945458						2-1/2
UCC-945460	2-1/4	1-1/8	1"	9/16	1/2-13	1-1/2
UCC-945462						2"
UCC-945464						2-1/2

Steel, Brass, Black Phenolic Plastic Knobs With Inserts



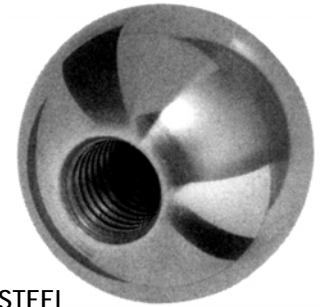
Steel and Brass Ball Knobs feature a smooth highly polished comfortable hand grip with added weight for more leverage.

STEEL and BRASS BALL KNOBS

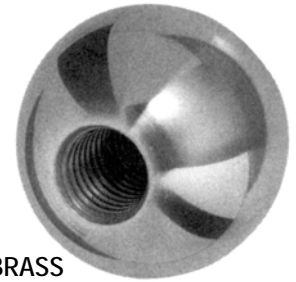
STEEL PART NO.	BRASS PART NO.	A	T THD	
UCC-845131	UCC-845231	3/4	10-24	
UCC-845132	UCC-845232		10-32	
UCC-845133	UCC-845233	1"	10-24	
UCC-845134	UCC-845234		10-32	
UCC-845135	UCC-845235		1/4-20	
UCC-845136	UCC-845236		1/4-28	
UCC-845137	UCC-845237		5/16-18	
UCC-845138	UCC-845238		5/16-24	
UCC-845156	UCC-845256	1-3/8	3/8 - 16	
UCC-845139	UCC-845239		1/4-20	
UCC-845141	UCC-845241		1/4-28	
UCC-845142	UCC-845242		5/16-18	
UCC-845143	UCC-845243		5/16-24	
UCC-845144	UCC-845244		3/8 - 16	
UCC-845145	UCC-845245		3/8-24	
UCC-845146	UCC-845246		7/16-20	
UCC-845147	UCC-845247		1/2-13	
UCC-845148	UCC-845248		1/2-20	
UDB-945130			1-1/2	BLANK
UDB-945140				3/8-16
UCC-845150	UCC-845250	1-7/8	3/8 - 16	
UCC-845152	UCC-845252		1/2-13	
UCC-845154	UCC-845254		5/8-11	
UDB-945150		2"	BLANK	
UDB-945160			5/8-18	

Steel Ball Knobs are also available with black oxide finish.

TO SPECIFY STEEL BALLS BLACK OXIDIZED, ADD 'B' AFTER PART NO.



STEEL



BRASS

Highly polished Steel or Brass Balls are machined from solid bar steel.

Brass Balls are corrosion resistant to water.

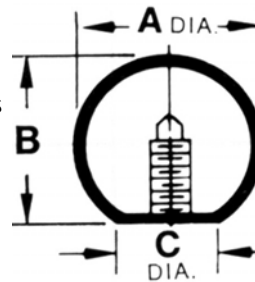
Use on fixtures, machines, tools, assemblies. Broad range of uses includes valves, spigots, levers on tractors and in farm/industrial equipment and assemblies.

Plastic Ball Knobs feature a rust proof smooth comfortable hand grip for actuating levers.

BLACK PHENOLIC PLASTIC BALL KNOBS

NEW PART NO.	OLD PART NO.	A	B	C	T THD			
UCC-845260	UDB-945050	11/16	19/32	3/8	10-32			
UCC-845262		3/4	47/64	1/2	1/4-20			
UCC-845264					10-32			
UCC-845266	UDB-945060	1"	15/16	1/2	1/4-20			
UCC-845268					1/4-28			
UCC-845270	UDB-945070				5/16-18			
UCC-845272					5/16-24			
UCC-845274					3/8 - 16			
UCC-845276					1-1/4	1-1/4	17/32	1/4-20
UCC-845278		5/16-18						
UCC-845280		1-3/8	1-1/8	5/8	1/4-20			
UCC-845282					5/16-18			
UCC-845284	UDB-945080				3/8 - 16			
UCC-845286					3/8-24			
UCC-845288	UDB-945090				1-9/32	13/16	1/2-13	1/2-20
UCC-845290	UDB-945100							5/16-18
UCC-845292		1-1/2	1-1/2	5/8	3/8 - 16			
UCC-845294					1/2-13			
UCC-845296					3/8 - 16			
UCC-845298		1-15/16	1-27/32	13/16	1/2-13			
UCC-845300					5/8-18			
UCC-845302	UDB-945110	2"	1-13/16	1-3/32	1/2-13			
UCC-845304					1/2-13			
UCC-845306					1/2-13			

Broad range of applications for BALL KNOBS



MODELS WITHOUT MOLDED METAL INSERT THREADS ARE MOLDED.

UNITED provides five different attachment methods:

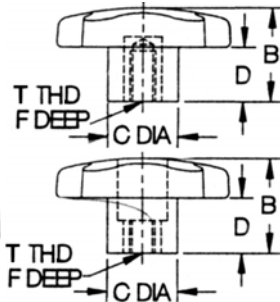
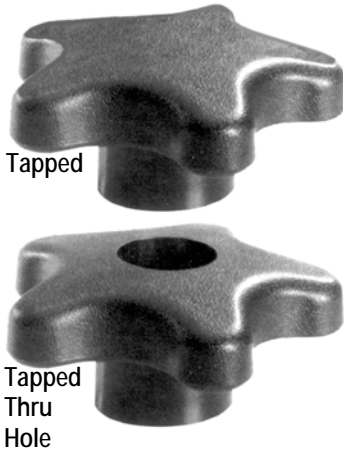
1. Tapped metal inserts or internal threaded bushings.
2. Tapped plastic threads, molded or tapped into the cored ball.
3. Core holes can be provided to any shape and size required.
4. Reamed metal bushings molded into plastic knobs as required.
5. Threaded metal studs to your specifications.

Send a sketch of your design and receive our low costs.

Star, T-Knobs & 3-Prong Knobs

UNITED Thermo Plastic Knobs
Star – T-Knobs – 3-Prong Knobs

STAR KNOBS — THERMO PLASTIC



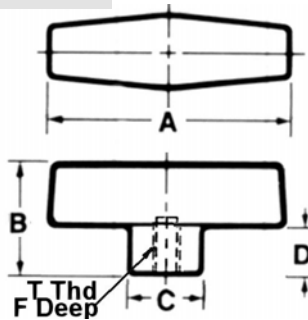
Used on fold-down handles in home, sports and industry:

- In small vehicles — golf carts, mopeds, snowmobiles
 - Sports machines — motorcycles, tricycles, exercise bikes
 - Yard equipment — wagons, edgers, mowers, blowers
 - Mounts — camera tripods, light stands, projectors
 - Machine shops — small automatic tools, motors
- Wherever you need a durable attractive knob, **UNITED** has it!

Texturized surface resists scratches, nicks and finger prints. Comfortable non-slip grip is ergonomically designed for durability and easy use. Resists oil and most chemicals.

TAPPED						
TAPPED PART NO.	A KNOB DIA	B OAL LEN	C HUB DIA	D HUB LEN	T THD	F DEPTH
UCC-845320	2-1/4	1"	7/8	1/2	1/4-20	1/2
UCC-845322					5/16-18	5/8
UCC-845324					3/8 - 16	1/2
TAPPED THRU HOLE						
TAPPED THRU HOLE	A KNOB DIA	B OAL LEN	C HUB DIA	D HUB LEN	T THD	F DEPTH
UCC-845326	2-1/4	1"	7/8	1/2	1/4-20	5/8
UCC-845328					5/16-18	
UCC-845330					3/8 - 16	

T- KNOBS – THERMO PLASTIC



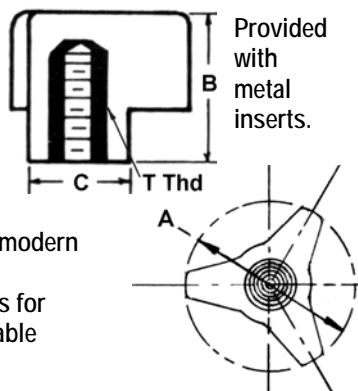
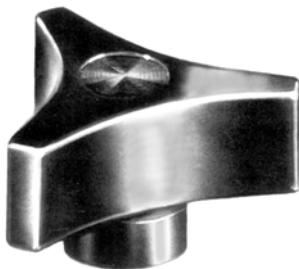
Excellent resistance to oil, grease, water and most chemicals. Resistance to scratches and marring.

Multiple applications. See list above. Long lasting service and comfortable grip will keep you using **UNITED** Knobs.

Comfortable grip. Moderate to heavy torque. Black satin polished finish. Furnished with metal inserts.

UNITED	A	B	C	D HUB	T	F
UCC-845334	1-5/8	3/4	1/2	1/2	1/4-20	7/16
UCC-845336	2"	1-1/8	3/4	1/2	1/4-20	1/2
UCC-845338					5/16-18	1/2
UCC-845340					3/8 - 16	1/2
UCC-845342	2-1/2	1-1/8	3/4	1/2	3/8 - 24	1/2

3-PRONG KNOBS — THERMO PLASTIC



Provided with metal inserts.

Excellent resistance to oil, grease, water, most chemicals and scratches or mars. Multiple applications. See list above. Designed for durability.

UNITED 3-PRONG KNOBS have modern satin finishes and aerodynamic appearances with rounded edges for comfort. Extra sturdy hub. Durable construction.

UNITED PART NO.	A KNOB DIA.	B KNOB HT.	C HUB DIA	T THD
UCC-845348	1-1/2	1"	5/8	10-32
UCC-845350				10-24
UCC-845352				1/4-20
UCC-845354	2"	1-1/4	3/4	5/16-18
UCC-845356				1/4-20
UCC-845360				5/16-18
UCC-845362				3/8 - 16
UCC-845364				3/8 - 24
UCC-845366				1/4-20
UCC-845368	2-1/2	1-1/4	13/16	5/16-18
UCC-845370				3/8 - 16

UNITED Thermo Plastic Knobs

Tapered Thru Hole – Tapered – Oval

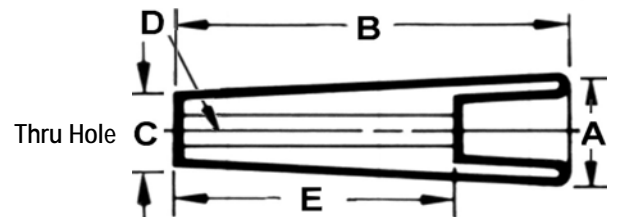
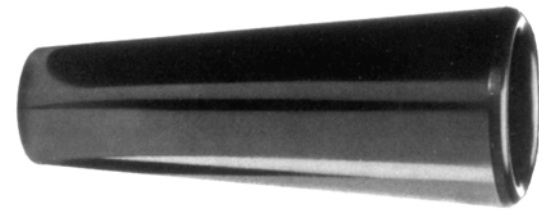
Tapered and Oval Phenolic Knobs

UNITED Heavy Duty Knobs are designed with ergonomic features for the best grasp on handles and machine levers.

Creative applications to meet your requirements work very well with these Knobs. Use Shoulder Screws and/or add Uniserts shown in Section F to create revolving handles. Match thread sizes of Shoulder Screws with Uniserts.

THRU HOLE WITHOUT INSERT	A MAJOR DIA.	B KNOB LEN	C MINOR DIA	D SHOULDER SCREW HOLE		E HOLE LENGTH
				NOMINAL	ACTUAL	
UDB-845380	1"	2-9/16	5/8	1/4	.251/.256	5/8
UDB-845383	1-1/8	3-11/16	3/4	3/8	.380/.385	2-5/8
UDB-845384	1-3/8	4-3/32	1"	3/8	.380/.390	2-5/8

TAPERED THRU HOLE KNOBS

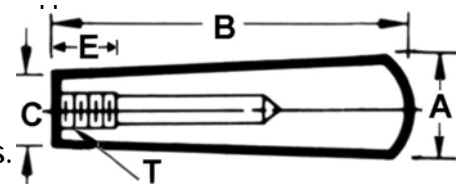
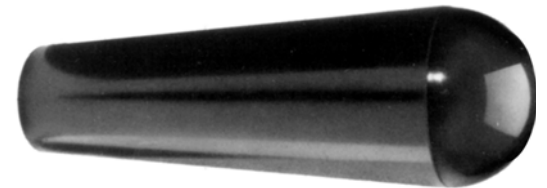


Comfortable grip. Moderate to heavy torque. Black satin polished finish with brass inserts. Modern distinctive UNITED Tapered Knobs and Handles are ideal for many

TAPERED MOLD-IN BRASS INSERT KNOBS

WITH MOLD-IN BRASS INSERT	A MAJOR DIA.	B KNOB LEN	C MINOR DIA	T THD	E TAP DEPTH
UDB-845390	1"	1-1/4	1/2	1/4-20	7/16
UDB-845391	1"	2-5/8	5/8	1/4-20	7/16
UDB-845392				5/16-18	
UDB-845394				1/4-20	
UDB-845398				3/8-16	
UDB-845400	1-1/8	3-7/8	3/4	3/8-16	5/8
UDB-845402	1-3/8	4-1/2	1"	1/2-13	2"

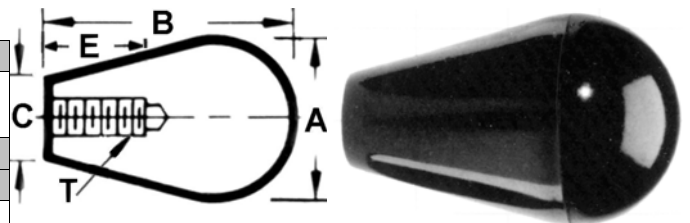
applications such as short levers, push-pull rods, control levers, handle fixtures, home/garden equipment and power tools.



Phenolic Plastic Knobs have excellent resistance to oil, grease, most chemicals and scratches or mars.

PHENOLIC PLASTIC TAPERED OVAL KNOBS

TAPPED					
TAPPED	A MAJOR DIA	B OAL LEN	C MINOR DIA	T THD	E TAP DEPTH
UDB-945490	3/4	1-1/4	3/8	10-32	5/16
UDB-945491				1/4-20	7/16
UDB-945492	1"	1-5/8	1/2	1/4-20	7/16
UDB-945493				5/16-18	7/16
UDB-945494				3/8-16	1/2
UDB-945495				1-3/16	1-7/8
UDB-945496	1-5/8	2-1/2	7/8	3/8-16	1/2
UDB-945497				1/2-13	5/8



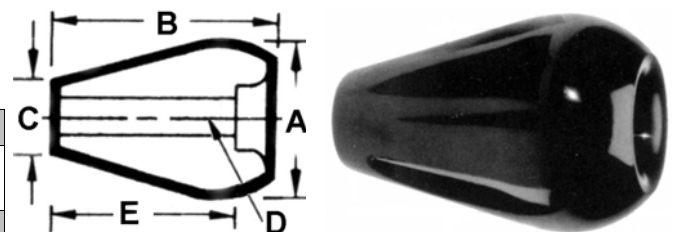
Strong Black Phenolic Plastic with Brass Inserts. Perfect for levers and push-pull handles.

Moderate to heavy torque. Comfortable grip. Satin finish.

PHENOLIC PLASTIC TAPERED TAPPED THRU OVAL KNOBS

Four Oval Knob sizes. Use with Shoulder Bolts in Section F for revolving bolt handles.

THRU HOLE — NO INSERT					
TAPPED THRU HOLE	A MAJOR DIA	B OAL LEN	C MINOR	D I.D. THRU	E HOLE DEPTH
UCC-945500	1-3/16	1-3/4	9/16	.375	1-7/16

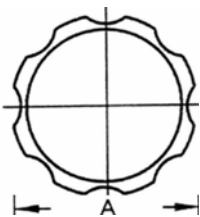


Fluted & Knurled Torque Knobs

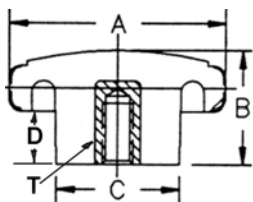
UNITED Thermo Plastic Knobs Fluted and Knurled Torque Knobs

FLUTED KNOBS — THERMO PLASTIC

Molded-in Brass Insert creates greater thread strength. High torque with finer adjustments. These larger grip knobs provide an easy grasp for fine tuning your adjustments.



Brass Inserts



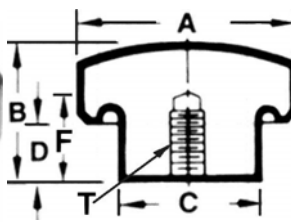
Material is durable thermo-plastic construction. **UNITED** Fluted Knobs have edges rounded for a comfortable grip. Attractive modern fluted design.

Perfect for a wide variety of applications!

FLUTED INSERTS PART NO.	A KNOB DIA	B OAL LEN	C HUB DIA	D HUB LEN	T THD
UDB-945470	1-3/8	27/32	27/32	25/64	10-32
UDB-945472					1/4-20
UDB-945474					5/16-18
UDB-945476	1-3/4	1-1/16	1-1/16	1/2	1/4-20
UDB-945478					5/16-18
UDB-945480					3/8 - 16
UDB-945482	2-3/8	1-5/16	1-1/4	5/8	3/8 - 16
UDB-945484					1/2-13
UDB-945486	3-1/4	1-25/32	2"	7/8	1/2-13
UDB-945488					5/8-11

Finger fitting comfortable grip. Black phenolic plastic satin polished finish. Furnished with metal inserts.

KNURLED TORQUE KNOBS – THERMO PLASTIC



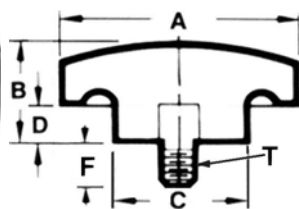
Brass Inserts Provided

Excellent resistance to oil, grease, water, most chemicals and scratches or mars. Multiple applications. Designed for durability.

KNURLED / IN-INSERTS	A KNOB DIA	B OAL	C HUB DIA	D HUB DEPTH	T THD	F TAP DEPTH
UCC-945660	5/8	9/16	1/2	—	10-32	5/16
UCC-945662	3/4	17/32	1/2	1/16	1/4-20	5/16
UCC-945664	1"	21/32	5/8	5/16	10-32	5/16
UCC-945666					1/4-20	3/8
UCC-945668	1-3/8	25/32	3/4	3/8	1/4-20	7/16
UCC-945670					5/16-18	
UCC-945672	1-7/8	1"	1"	1/2	5/16-18	7/16
UCC-945674					3/8-16	1/2

Low profile modern design Knurled Torque Knobs feature a comfortable grip. Moderate to heavy torque. Black satin polished finish. Furnished with metal inserts.

KNURLED TORQUE STUD KNOBS — THERMO PLASTIC



UNITED Knurled Torque Knobs come in five diameter groupings. All have tapped metal brass inserts and clamping studs.

Wherever clearance may be an issue, this is the moderate torque knob to use! Non-slip finger control is popular for a wide variety of applications.

KNURLED / STUD PART NO.	A KNOB DIA	B OAL	C HUB DIA	D HUB DEPTH	T THD	F THD LEN
UCC-945678	3/4	17/32	1/2	1/16	8-32	1/2
UCC-945680					10-32	1/2
UCC-945682					10-32	1"
UCC-945684					1/4-20	1/2
UCC-945686	1"	21/32	5/8	5/16	1/4-20	1"
UCC-945688	1-3/8	25/32	3/4	3/8	1/4-20	1/2
UCC-945690	1-7/8	1"	1"	1/2	3/8-16	1"