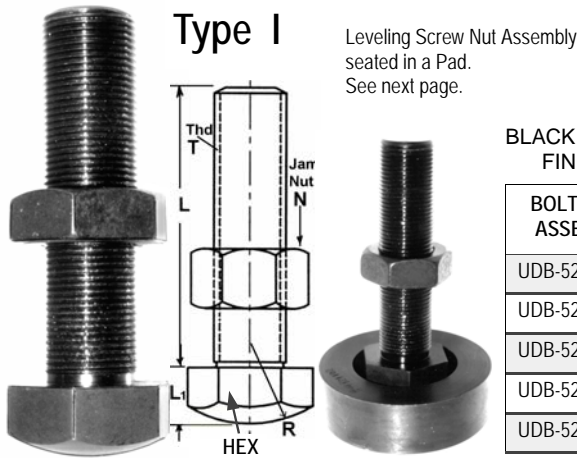


Heavy Duty Leveling Screws

Leveling Screw Assemblies

ELEVATE — LOCATE — LEVEL
Machines - Fixtures - Jigs
Cast Bases - Equipment
Heavy Shelving and Structures

LEVELING SCREW NUT ASSEMBLY



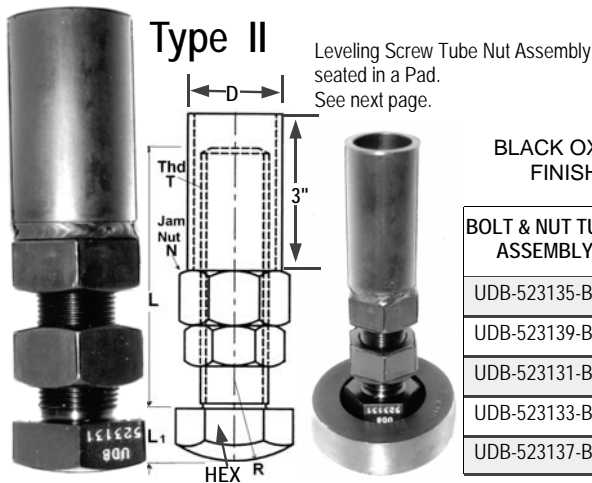
Type I
 Leveling Screw Nut Assembly seated in a Pad. See next page.

BLACK OXIDE FINISH

Solidly constructed adjustable Radius Head Screw comes with Jam Nut. Pad is optional — See next page.
 FOR JAM NUT ONLY, ADD 'N' TO BASE PART NO. EX: UDB-523135-N

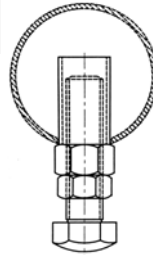
BOLT & NUT ASSEMBLY	BOLT & NUT WITH PAD ASSY	T THD	L	L ₁	R SPHERICAL RADIUS	H HEX	N JAM NUT	P PAD SEE PG. H15	MAX LD. (LBS)
UDB-523135-BN	UDB-523135-BNP	3/4-16	4"	5/8	1"	1-1/8	3/4-16	UDB-721104	10,000
UDB-523139-BN	UDB-523139-BNP	1-14	4"	13/16	1-1/2	1-1/2	1-14	UDB-721106	14,000
UDB-523131-BN	UDB-523131-BNP	1-14	5"	13/16	1-1/2	1-1/2	1-14	UDB-721106	14,000
UDB-523133-BN	UDB-523133-BNP	1-1/4-12	5"	1"	2"	1-7/8	1-1/4-12	UDB-721108	18,000
UDB-523137-BN	UDB-523137-BNP	2-12	8"	2"	4"	3"	2-12	UDB-721110	22,000

LEVELING SCREW TUBE NUT ASSEMBLY



Type II
 Leveling Screw Tube Nut Assembly seated in a Pad. See next page.

BLACK OXIDE FINISH



Leveling Screw Tube Nut designed to level adjust heavy duty pipes or tube structures.

1. Torch cut pipe or tube 1/16 to 1/8 inch larger than Tube Nut. See chart.
2. Weld at location, or Tube and Wrench the Nut. FOR JAM NUT ONLY, ADD 'N' TO BASE PART NO. EX: UDB-523135-N

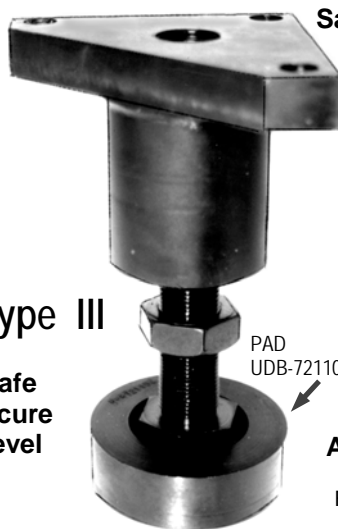
BOLT & NUT TUBE ASSEMBLY	BOLT & NUT TUBE WITH PAD ASSY	T THD	L	L ₁	R SPHERICAL RADIUS	H HEX	N JAM NUT	P PAD SEE PG. H15	MAX LD.	D DIA
UDB-523135-BNT	UDB-523135-BNTP	3/4-16	4"	5/8	1"	1-1/8	3/4-16	UDB-721104	10,000	1-1/8
UDB-523139-BNT	UDB-523139-BNTP	1-14	4"	13/16	1-1/2	1-1/2	1-14	UDB-721106	14,000	1-1/2
UDB-523131-BNT	UDB-523131-BNTP	1-14	5"	13/16	1-1/2	1-1/2	1-14	UDB-721106	14,000	1-1/2
UDB-523133-BNT	UDB-523133-BNTP	1-1/4-12	5"	1"	2"	1-7/8	1-1/4-12	UDB-721108	18,000	1-3/4
UDB-523137-BNT	UDB-523137-BNTP	2-12	8"	2"	4"	3"	2-12	UDB-721110	22,000	2-3/8

LEVELING SCREW CORNER ASSEMBLY

BLACK OXIDE FINISH



UDB-523203-BN

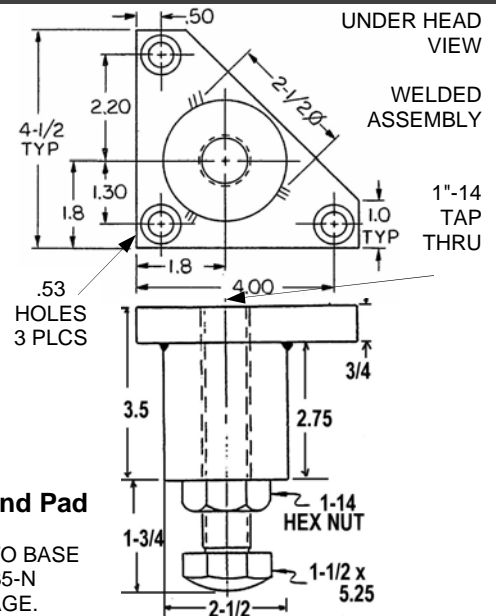


UDB-523203-BNP

Safe - Secure - Level!
HEAVY DUTY CORNER LEVELING ASSEMBLY
 1 - 14 HEX

Assembly with Bolt Nut and Pad

FOR JAM NUT ONLY, ADD 'N' TO BASE PART NO. EX: UDB-523135-N SEE BOTTOM OF NEXT PAGE.



Side Leveling Screw Heavy Duty Assembly

**Heavy Duty Side
Leveling Assemblies**

SIDE LEVELING SCREW ASSEMBLY

**IDEAL
HEAVY DUTY PADS
for Equipment,
Casting Fixtures,
Machine Tools.**

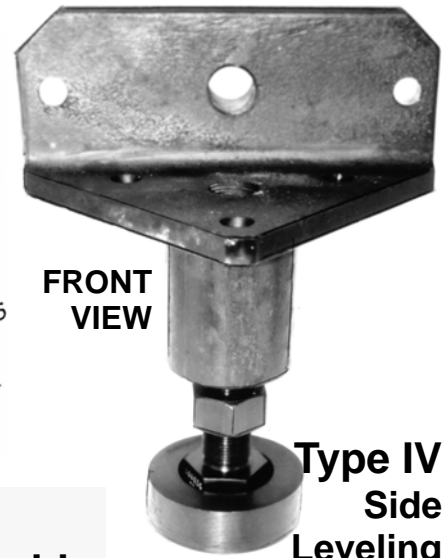
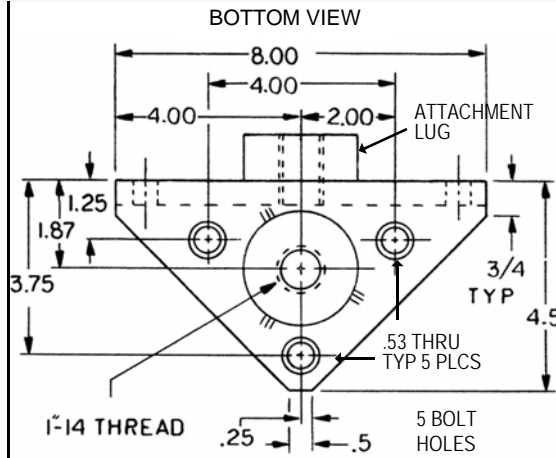
**Used in minimal
Sets of 4
for Balanced Loads.**

Pads are recommended
to avoid surface damage
and skid.

Welded Construction
Black Oxide Finish

ATTACHMENT LUG
Used to move structure.

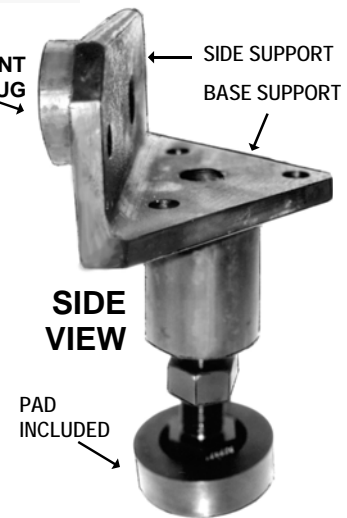
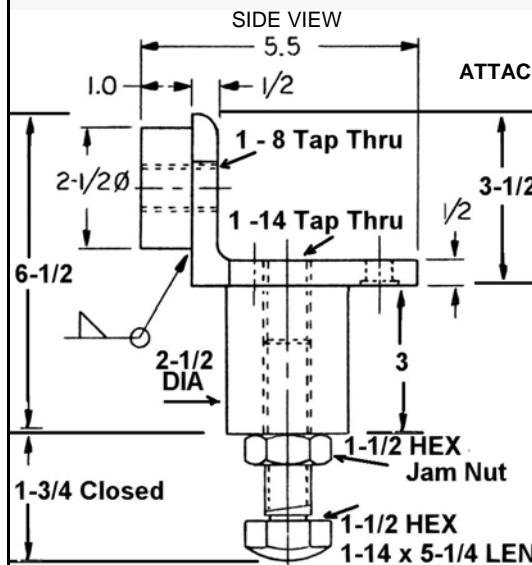
FIVE Bolt-On Holes.
.53 to secure bolts,
sides and bases
of structure.



**FRONT
VIEW**

**Type IV
Side
Leveling**

UDB-523209-BN Bolt and Nut Type IV Assembly



**SIDE
VIEW**

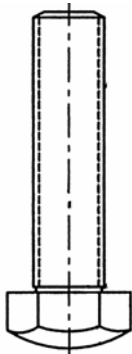
**PAD
INCLUDED**

TO ORDER REPLACEMENT PARTS for LEVELING ASSEMBLIES:

Add Part Letters below as a suffix to Base Part Number.

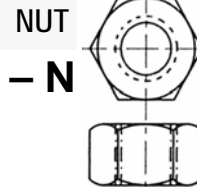
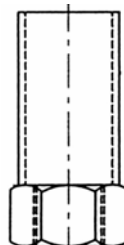
Refer to previous page.

**SPHERICAL
LEVELING
SCREW
- B**



The
Spherical
Leveling
Screw and
Socket are
used in Sets
of 2, 4 or 8.

**TUBE
NUT
- TN**



**PAD
- P**



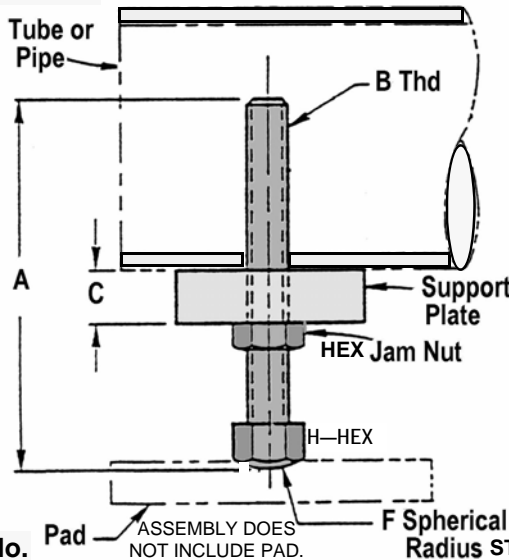
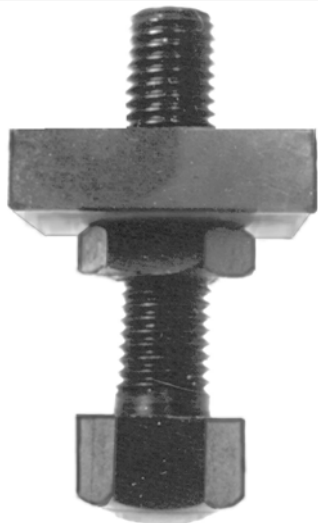
PAD PART NO.	R	C	D
UDB-721104	1"	3/4	2-1/2
UDB-721106	1-1/2	1"	3-1/4
UDB-721108	2"	1-1/4	4-1/2
UDB-721110	4"	1-7/8	7"

Jig Leveling Feet and Pads

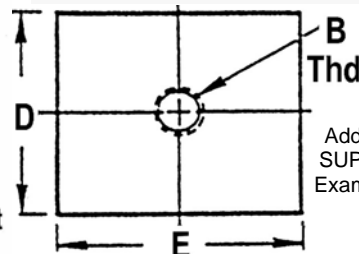
Jig Leveling Feet and Support Pads

JIG LEVELING FEET ASSEMBLY

Individual or Replacement Parts available separately.



SUPPORT PLATE – Add 'SP' to Part No.



Add SP to Part No. for SUPPORT PLATE only
Example: UDB-930561-SP

Pads prevent skid and movement.
Pads reduce vibration.

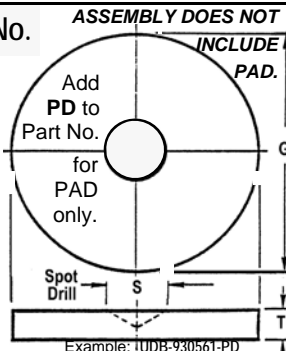
Load is secure and safe with Stud Radius mounted in the Base Plate as shown.
2:1 Safety Factor is used.

Ratings are with the plates provided on this page.

STUD – Add 'ST' to Part No.

Add ST to Part No. for STUD only.
Example: UDB-930561-ST

PAD – Add 'PD' to Part No.

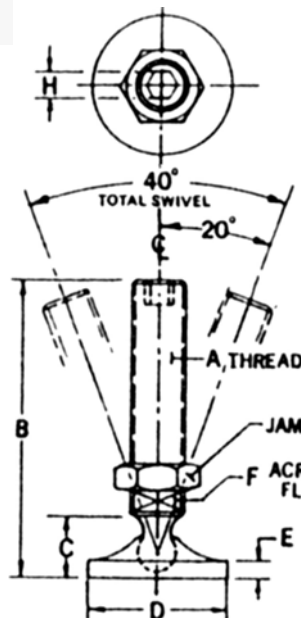


NEW ASSY PART NO. (OLD P/N)	HEX JAM NUT (SEE PG F33)	A	B THD	C	D	E	F SPHER. RADIUS	H HEX	G DIA PAD	S SPOT DIA	T
UDB-930561 (UDB-930560)	UDB-925410	3"	3/8-16	1/2	1-1/2	1-3/4	.60	11/16	3"	.83	.4
UDB-930562 (UDB-930561)	UDB-925415	4"	1/2-13	1/2	1-3/4	2"	.80	7/8	4"	1.00	.5
UDB-930563 (UDB-930562)	UDB-925420	4"	5/8-11	5/8	2"	2"	1.16	1-1/16	6"	1.17	.6
UDB-930564 (UDB-930563)	UDB-925425	4"	3/4-10	5/8	2"	2"	1.50	1-1/4	8"	1.17	.7
UDB-930565 (UDB-930564)	UDB-925435	5"	1-8	3/4	2"	2"	1.80	1-5/8	10"	1.33	1.0
UDB-930566 (-)	UDB-925440	7"	1-1/2-12	1"	3-1/2	3-1/2	2.00	2-3/8	12"	2.00	1.2

JIG LEVELING SCREW PAD



JAM NUT PROVIDED.



'BIG FOOT' LEVELING FOOT PAD with REMOVABLE PAD

Left Hand Pad Ball Thread eliminates back out while allowing pad free rotation and pivoting.
FOR JAM NUT, ADD 'JN' TO PART NO.

UNITED PART NO.	A THD	B HT	C THD to PAD	D PAD DIA	E PAD THICK	F FLATS	H HEX I.D.	LOAD RATING
UDB-954200	1/2-13	2-7/32	7/8	1-1/2	1/4	3/8	1/4	1400
UDB-954205	1/2-13	4-7/32	7/8	1-1/2	1/4	3/8	1/4	400
UDB-954210	5/8-11	3-1/4	29/32	2"	5/16	1/2	5/16	3000
UDB-954215	5/8-11	5-1/4	29/32	2"	5/16	1/2	5/16	1400
UDB-954220	3/4-10	2-17/32	1-1/16	2-1/2	3/8	9/16	3/8	3600
UDB-954225	3/4-10	5-17/32	1-1/16	2-1/2	3/8	9/16	3/8	1800
UDB-954230	1-8	2-19/32	1-19/32	3-1/2	1/2	3/4	1/2	6800
UDB-954235	1-8	5-19/32	1-19/32	3-1/2	1/2	3/4	1/2	6400

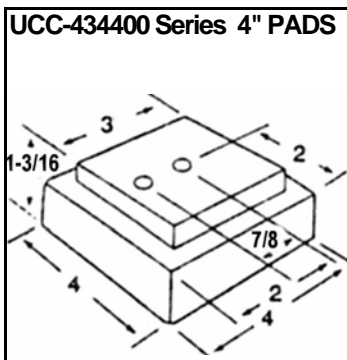
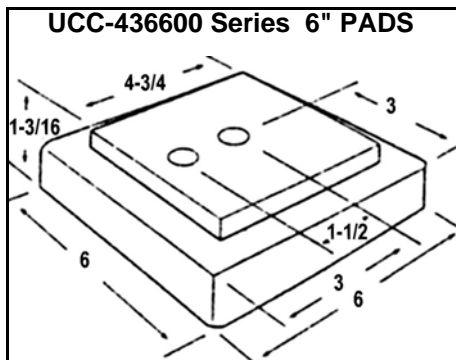
Carburized — Hardened 12L14 Steel — Black Oxide — Zinc Plated — Yellow Chromate Finish also available.

Uni-Pads—“The Perfect Pad”

CUSHIONED TO CUT COSTLY VIBRATION, MACHINE FLOOR WEAR and SHOP NOISE



The Most Effective Pad — The Perfect Pad!



UNITED PART NO.	SIZE	LOAD in POUNDS
UCC-434404	4" x 4"	Up to 4,000
UCC-434410	4" x 4"	4,000 to 10,000
UCC-436604	6" x 6"	Up to 4,000
UCC-436610	6" x 6"	4,000 to 10,000

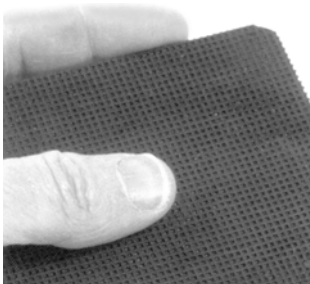
Longest Life Cushioned Pad

Choices of:

- Up to 4,000 pound loads for 60 durometer hardness Elastomer Compound.
- Up to 10,000 pound loads for 80 durometer hardness Elastomer Compound.
- Tiny suction cups on the bottom of the Pad stabilize mounted machines.
- Cushion construction reduces noise and maintains balance against vibration.
- Uni-Pad is “The Perfect Pad”!

“The Perfect Pad” is supplied with a 1/2" threaded cold forged 2-1/2" long bolt.

Can be levelled and aligned quickly and without special tools.



Two tapped Bolt Holes in the high strength aluminum alloy plate allow leveling and attachment flexibility. The plate is permanently imbedded in the elastomer pad for strength and durability.

Ideal to support heavy machines, compressors, grinders, mills, lathes and presses.

Vibration is isolated or eliminated.

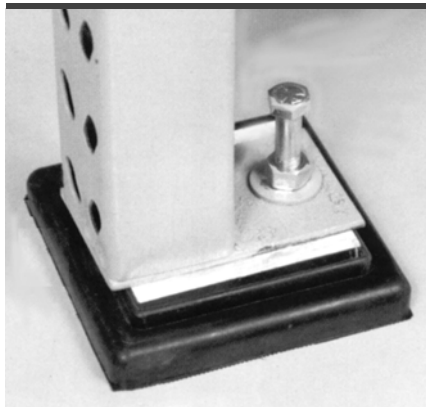
Maintenance and repair costs are reduced as vibration and shock are attenuated.

Floor life is extended and machines do not slip or "walk." Accidents are reduced, and shop life is improved by less noise and chattering of machines.

Uni-Pads are highly resistant to oil and chemicals.

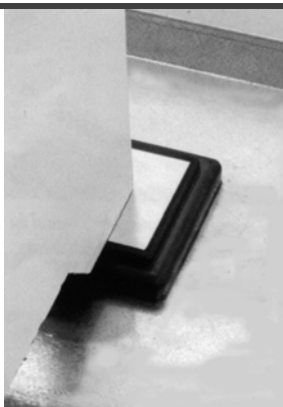
Performance life is lengthened even under extreme operating conditions because of the non-corrosive nature of the elastomer compound.

No wonder it's “The Perfect Pad”!



UNI-PAD

Supplied with 1/2 inch threaded Long Bolt. No other tools needed.



UNI-PAD

Handles up to 10,000 pound loads without dancing all over the place.



Fixture Jacks

UNITED Fixture Jacks And Flat Foot Jig Feet

FIXTURE JACKS

RADIUS SPINDLE



SERRATED SPINDLE

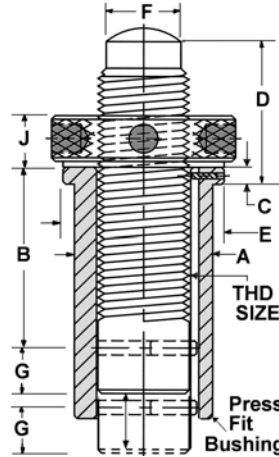


ADJUSTABLE SPINDLES



UNITED FIXTURE JACKS provide positive pressure stops. Vertical elevation adjusts to various heights in milling. Bushing does not rotate.

Available with non-marring radius adjustable spindle or strong-grip serrated adjustable spindle.



- Hardened and ground bushings
- Sturdy
- Long Wearing
- Dependable
- Adjustable
- Heavy Duty
- Versatile

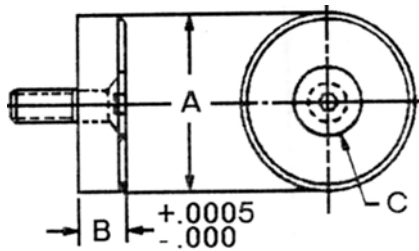
- Elevates vertically
- Press Fit Bushing
- No rotation

Quality you can trust and Strength you can depend on!

AVAILABLE IN C1144 STEEL CASE HARDENED AND GROUND HEAT TREATED WITH BLACK OXIDE FINISH.

RADIUS SPINDLE PART NO.	SERRATED SPINDLE PART NO.	A PRESS FIT O. D.	B BUSHING HEIGHT	C FLANGE THICK	D ADJ. SPINDLE HT. MIN MAX		E FLANGE DIA	F SPINDLE DIA	G TRAVEL	J CHECK NUT HT.	THD SIZE
UDB-924901	UDB-924911	5/8	1-3/16	3/16	9/16	1-1/2	1"	1/4	5/32	3/8	3/8 - 16
UDB-924902	UDB-924912	1"	1-5/8	3/16	7/8	2-7/16	1-5/16	15/32	7/16	7/16	5/8-11
UDB-924903	UDB-924913	1-1/2	2-3/4	3/16	7/8	3-1/2	1-3/4	13/16	1/2	9/16	1 - 8

FLAT FOOT JIG SUPPORT FEET



UNITED FLAT FOOT JIG SUPPORTS have a large diameter with close tolerance flat feet. They assure level support and stability in less fixture space.

- STRESS-PROOF STEEL
- SURFACE GROUND
- HEAT TREATED
- BLACK OXIDE FINISH.
- CAP SCREW INCLUDED
- AVAILABLE IN METRIC SIZES

UNITED PART NO.	A O. D.	B THICK	FLAT HEAD SOCKET SCREW
UDB-919301	1/2	1/8	8 - 32 x 3/8
UDB-919302	1/2	1/4	8 - 32 x 1/2
UDB-919303	5/8	1/4	10 - 32 x 5/8
UDB-919304	7/8	3/8	1/4 - 20 x 3/4
UDB-919305	1-1/4	3/8	5/16 - 18 x 3/4
UDB-919306	1-5/8	3/8	1/2 - 13 x 3/4