

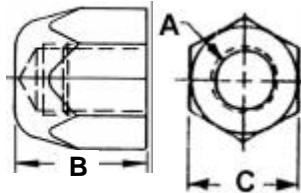
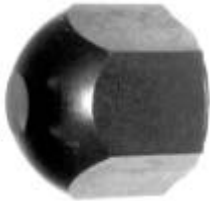
**Nuts: Acorn-Coupling-
Lock - Spherical Flange**

UNITED's Nuts! Acorn, Coupling, Lock and Flange Nuts

GET MORE FOR LESS AT UNITED!

ACORN NUTS

See Section G for Stainless.



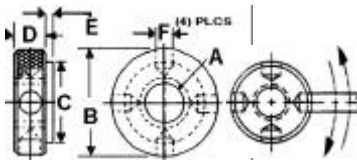
Closed end protects stud threads from damage. Heat treated black oxide finish.

ACORN NUT	A	B	C
UDB-925000	1/4-20	1/2	1/2
UDB-925005	5/16-18	5/8	9/16
UDB-925010	3/8 16	3/4	11/16
UDB-925015	1/2-13	15/16	7/8
UDB-925020	5/8-11	1-3/16	1-1/16
UDB-925025	3/4 10	1-3/8	1-1/4
UDB-925030	7/8 9	1-7/16	1-7/16

C12L15 STEEL HEAT TREATED WITH BLACK OXIDE FINISH.

KNURLED LOCK NUTS

See Section G for Stainless.



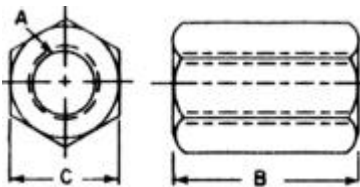
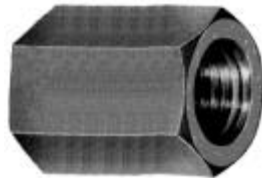
Quick thread locking on jigs and fixtures. 1/4 detents permit additional tightening with 1/4" pin.

1018 STEEL HEAT TREATED BLACK OXIDE

STEEL PART NO.	STAINLESS PART NO.	A THD I. D. SIZE	B O. D. DIA	C STEP DIA	D WIDTH	E LIP	F DIA +.005 -.000
UDB-925110	UDB-925110S	1/4 20	1-1/8	1"	7/16	1/16	.250
UDB-925115	UDB-925115S	3/8 16	1-1/8	1"	7/16	1/16	.250
UDB-925120	UDB-925120S	1/2 13	1-1/8	1"	7/16	1/16	.250
UDB-925125	UDB-925125S	5/8 11	1-3/8	1"	7/16	1/16	.250

COUPLING NUTS

Makes unlimited stud length combinations available. Heat treated black oxide finish.



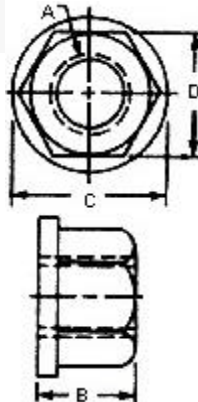
COUPLING NUT	A	B	C
UDB-925050	3/8 16	1	11/16
UDB-925055	1/2-13	1-1/4	7/8
UDB-925060	5/8-11	1-5/8	1-1/16
UDB-925065	3/4 10	1-7/8	1-1/4
UDB-925070	7/8 9	2-1/4	1-7/16
UDB-925075	1-8	2-1/2	1-5/8

FLANGE NUTS

See Section G for Stainless.



Large bearing area assures full surface contact. Available in National Coarse and National Fine Threads. See Section G for Stainless.



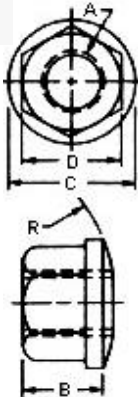
COARSE THD FLANGE NUT	A STUD THD	FINE THD FLANGE NUT	A STUD THD	B HT.	C DIA FLANGE	D HEX
UDB-925148	10 24	UDB-925198	1/4-28	5/16	1/2	1/2
UDB-925150	1/4-20	UDB-925200	1/4-28	5/16	5/8	1/2
UDB-925155	5/16-18	UDB-925205	5/16-24	3/8	3/4	9/16
UDB-925160	3/8-16	UDB-925210	3/8-24	1/2	7/8	11/16
UDB-925165	1/2-13	UDB-925215	1/2-20	11/16	1-1/8	7/8
UDB-925170	5/8-11	UDB-925220	5/8-18	13/16	1-3/8	1-1/16
UDB-925175	3/4-10	UDB-925225	3/4-16	1	1-5/8	1-1/4
UDB-925180	7/8-9	UDB-925230	7/8-14	1-1/8	1-3/4	1-7/16
UDB-925185	1-8	UDB-925235	1-14	1-1/4	2	1-5/8
UDB-925190	1-1/8-7	UDB-925240	1-1/8-12	1-3/8	2-1/4	1-13/16
UDB-925195	1-1/4-7	UDB-925245	1-1/4-12	1-3/8	2-1/4	1-13/16

SPHERICAL FLANGE NUTS

See Section G for Stainless.



Used with Spherical Washers shown in this Section. Spherical Nuts and Washers assure alignment and balanced thread loads.



SPHERICAL FLANGE NUT	A	B	C	D	R	Use with SPHERICAL WASHER NO.
UDB-925250	1/4-20	5/16	5/8	1/2	3/4	UDB-926450
UDB-925255	5/16-18	3/8	3/4	9/16	1	UDB-926455
UDB-925260	3/8-16	1/2	7/8	11/16	1-1/4	UDB-926460
UDB-925265	1/2-13	11/16	1-1/8	7/8	1-1/2	UDB-926465
UDB-925270	5/8-11	13/16	1-3/8	1-1/16	1-3/4	UDB-926470
UDB-925275	3/4-10	1	1-5/8	1-1/4	2-1/4	UDB-926475
UDB-925280	7/8-9	1-1/8	1-3/4	1-7/16	2-1/2	UDB-926480
UDB-925285	1-8	1-1/4	2	1-5/8	2-3/4	UDB-926485
UDB-925290	1-1/8-7	1-1/4	2-1/4	1-13/16	3	UDB-926490
UDB-925295	1-1/4-7	1-1/4	2-5/8	2	3	UDB-926495

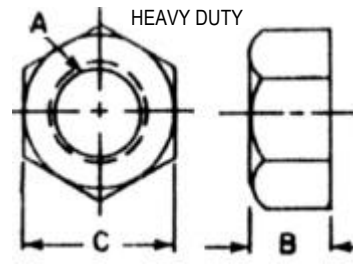
UNITED's Nuts! Hex, Jam, Check and Swivel Flange Nuts

Nuts: Hex—Hex Jam
Check—Swivel Flange

GET MORE FOR LESS AT UNITED!

HEX NUT	A	B	C
UDB-925350	1/4-20	1/4	1/2
UDB-925355	5/16-18	5/16	9/16
UDB-925360	3/8-16	3/8	11/16
UDB-925365	1/2-13	1/2	7/8
UDB-925370	5/8-11	5/8	1-1/16
UDB-925375	3/4-10	3/4	1-1/4
UDB-925380	7/8-9	7/8	1-7/16
UDB-925385	1-8	1	1-5/8

Outlasts competitive standard nuts! Precision machined and heat treated.

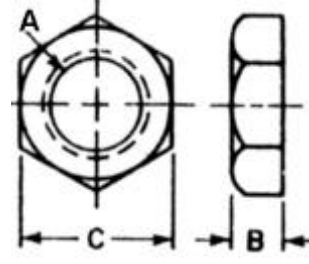


HEX NUTS



HEX JAM NUT	A	B	C
UDB-925400	1/4-20	11/64	1/2
UDB-925405	5/16-18	13/64	9/16
UDB-925410	3/8-16	15/64	11/16
UDB-925415	1/2-13	19/64	7/8
UDB-925420	5/8-11	23/64	1-1/16
UDB-925425	3/4-10	27/64	1-1/4
UDB-925430	7/8-9	31/64	1-7/16
UDB-925435	1-8	35/64	1-5/8

Used as lock nuts and in other light duty applications. Heat treated black oxide finish.

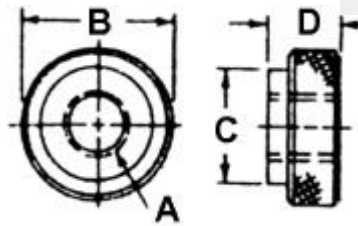


HEX JAM NUTS



ALLOY STEEL	Provided with all Torque Toggle Head Screws.			
CHECK NUT	A THD	B DIA.	C DIA.	D
UDB-955100	#10-32	3/4	7/16	3/16
UDB-955103	#10-24	3/4	7/16	3/16
UDB-955105	1/4-20	3/4	1/2	7/32
UDB-955110	5/16-18	3/4	1/2	1/4
UDB-955115	3/8-16	1	3/4	7/16
UDB-955120	1/2-13	1	3/4	7/16
UDB-955125	5/8-11	1-1/16	13/16	1/2

BLACK OXIDE FINISH
Used in essential tool room applications. Provided with toggle head screws. Black oxide finish. A wide variety of applications.



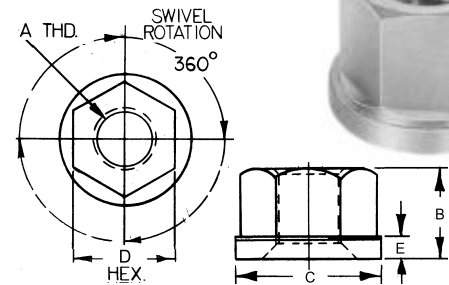
CHECK NUTS



The large bearing area of UNITED Flange Nuts insures full surface contact. Available with National Coarse or National Fine threads. Swivel Nuts do not mar surface.

SWIVEL FLANGE NUTS

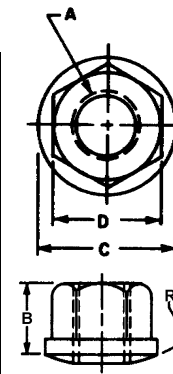
COARSE THD UNITED NO.	A	FINE THD UNITED NO.	A	B	C	D	E
UDB-925150SN	1/4-20	UDB-925200SN	1/4-28	5/16	5/8	1/2	.12
UDB-925155SN	5/16-18	UDB-925205SN	5/16-24	3/8	3/4	9/16	.12
UDB-925160SN	3/8-16	UDB-925210SN	3/8-24	1/2	7/8	11/16	.15
UDB-925165SN	1/2-13	UDB-925215SN	1/2-20	11/16	1-1/8	7/8	.20
UDB-925170SN	5/8-11	UDB-925220SN	5/8-18	13/16	1-3/8	1-1/16	.20
UDB-925175SN	3/4-10	UDB-925225SN	3/4-16	1	1-5/8	1-1/4	.28
UDB-925180SN	7/8-9	UDB-925230SN	7/8-14	1-1/8	1-3/4	1-7/16	.28
UDB-925185SN	1-8	UDB-925235SN	1-14	1-1/4	2	1-5/8	.28
UDB-925190SN	1-1/8-7	UDB-925240SN	1-1/8-12	1-3/8	2-1/4	1-13/16	.28
UDB-925195SN	1-1/4-7	UDB-925245SN	1-1/4-12	1-3/8	2-1/4	1-13/16	.28



Spherical Nuts are used with the spherical washers shown in Sections F and G. UNITED's Spherical Nut and Washer Sets assure alignment and balanced thread loads.

STANDARD SPHERICAL FLANGE NUT and SPHERICAL WASHER SETS

SPHERICAL FLANGE NUT UNITED NO.	Use with SPHERICAL WASHER NO.	A	B	C	D	R	Set Spherical Flange Nuts & Washers
UDB-925250	UDB-926450	1/4-20	5/16	5/8	1/2	3/4	UDB-925550
UDB-925255	UDB-926455	5/16-18	3/8	3/4	9/16	1	UDB-925555
UDB-925260	UDB-926460	3/8-16	1/2	7/8	11/16	1-1/4	UDB-925560
UDB-925265	UDB-926465	1/2-13	11/16	1-1/8	7/8	1-1/2	UDB-925565
UDB-925270	UDB-926470	5/8-11	13/16	1-3/8	1-1/16	1-3/4	UDB-925570
UDB-925275	UDB-926475	3/4-10	1	1-5/8	1-1/4	2-1/4	UDB-925575
UDB-925280	UDB-926480	7/8-9	1-1/8	1-3/4	1-7/16	2-1/2	UDB-925580
UDB-925285	UDB-926485	1-8	1-1/4	2	1-5/8	2-3/4	UDB-925585
UDB-925290	UDB-926490	1-1/8-7	1-1/4	2-1/4	1-13/16	3	UDB-925590
UDB-925295	UDB-926495	1-1/4-7	1-1/4	2-5/8	2	3	UDB-925595



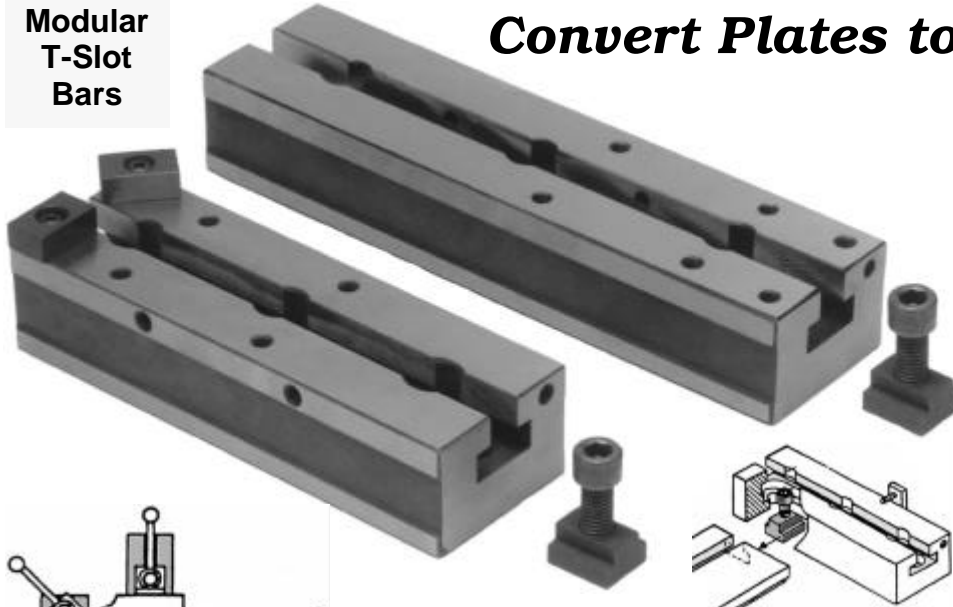
Black Oxide Case Hardened

**Modular
T-Slot Bars**

Modular T-Slot Bars

**Expand, Relocate, Change,
Reposition Your T-Slot Tables or
Convert Plates to T-Slot Modules**

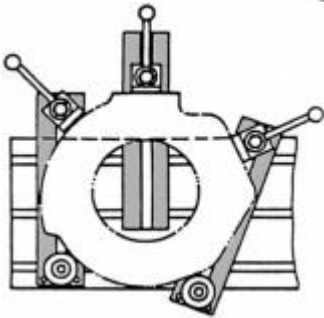
**Modular
T-Slot
Bars**



T-Slot Bars provide maximum positions for your table slots.

Double deck your table, grid plates or Tombstone fixtures.

Strong modular design allows use as tooling construction elements.



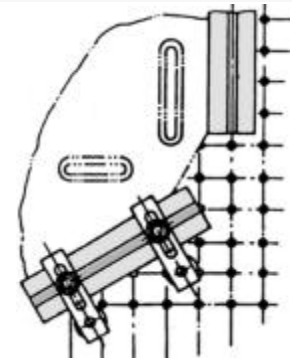
- ☆ Protect table surfaces
- ☆ Position clamps at an angle to table
- ☆ Extend machine table

Set-Ups are quick and simple!

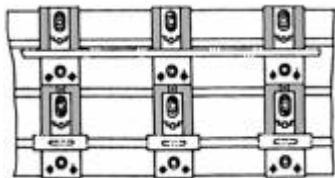
UNITED T-Slot Bars can be used vertically and on all T-Slot tables.

Position clamps and workpiece on or beyond the machine table.

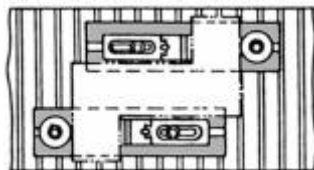
Bars are precisely ground to ± 0.0005 " so they may be used as parallels.



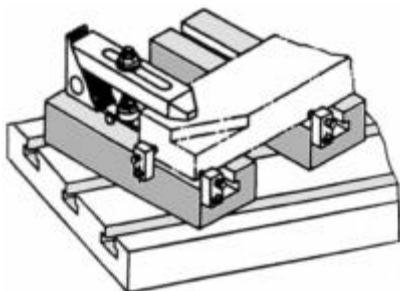
- ☆ Use as work stops
- ☆ Add T-Slot to grid plate
- ☆ Extend machining flexibility



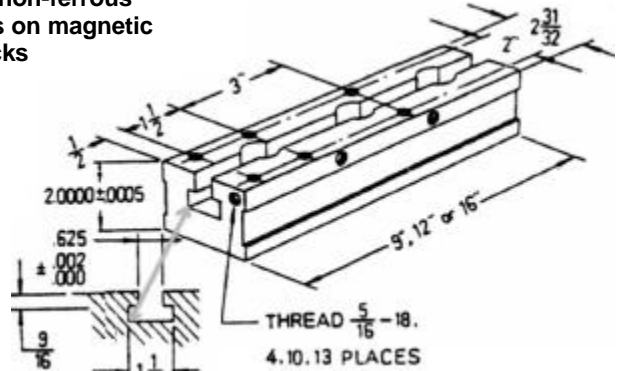
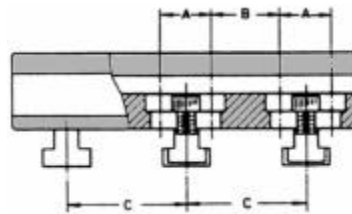
- ☆ Allows large or long work
- ☆ Holds multiple parts



- ☆ Holds non-ferrous parts on magnetic chucks



- ☆ Workpiece positioned at angle
- ☆ Clamps positioned anywhere
- ☆ Locate work piece with stops



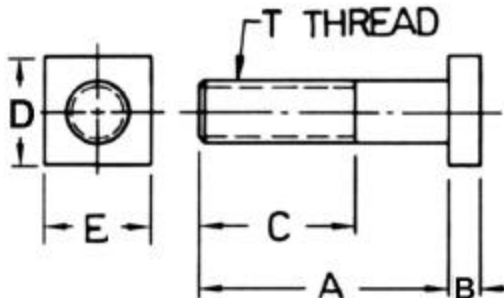
UNITED PART NO.	LENGTH	A	B	C FIT T-SLOT SPACING	THD HOLES 5/16-18	HOLES ON TOP	HOLES ON SIDE	HOLES ON END
UDB-501090	9"	1-3/8	1-3/4	1-3/4 to 4-1/2	10 HOLES	6	2	2
UDB-501100	9"	1-3/8	1-3/4	1-3/4 to 4-1/2	4 HOLES		2	2
UDB-501120	12"	2-1/8	1-7/8	1-7/8 to 6-1/8	10 HOLES	6	2	2
UDB-501130	12"	2-1/8	1-7/8	1-7/8 to 6-1/8	4 HOLES		2	2
UDB-501160	16"	2-1/8	1-7/8	1-7/8 to 6-1/8	13 HOLES	8	2	3

National ACME Automatic Tooling

ACME – GRIDLEY
TOOLING

CROSS-SLIDE & TOOL-SLIDE T – BOLTS

HEAT TREATED HIGH GRADE ALLOY STEEL of 130,000 PSI MINIMUM YIELD STRENGTH, and 150,000 PSI MINIMUM TENSILE STRENGTH. CONFORMS TO VIC SPECIFICATIONS. BLACK OXIDE FINISH.

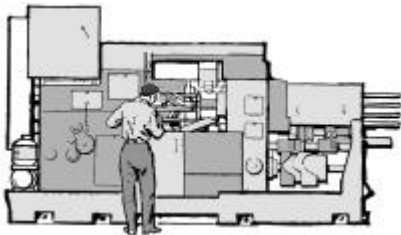


FOR HIGH CLAMPING STRENGTH

FOR MATING T-SLOT NUTS, SEE PAGE F36.

UNITED PART NO.	ACME PART NO.	T THD	A LEN	B HEAD	C THD LEN	D HT.	E TABLE SLOT	TOOL SLIDE	MACHINE SIZE
UDB-941621		3/8- 16	1"	15/64	13/16	3/4	3/4	FLAT/ANGULAR	9/16-1-1/4 RA-6
UDB-941622		3/8- 16	1-1/2	15/64	1-5/16	3/4	3/4	FLAT/ANGULAR	9/16-1-1/4 RA-6
UDB-941623	14707	7/16 14	23/32	15/64	1/2	3/4	3/4	ANGULAR	9/16 1 RA-6
UDB-941628	14745	7/16 14	7/8	7/32	1/2	5/8	3/4	FLAT	9/16 1 RA-6
UDB-941630		7/16 14	1-1/2	15/64	1-5/16	3/4	3/4	FLAT/ANGULAR	9/16-1-1/4 RA-6
UDB-941634	A-1058	3/8 16	1-1/16	3/16	11/16	5/8	5/8	FLAT	3/4 RA-8
UDB-941636	1129	7/16 14	31/32	11/32	1/2	7/8	7/8	ANGULAR	1-1/4 1 RA-6
UDB-941637	14727	7/16 14	1-3/16	19/64	3/4	3/4	3/4	FLAT	1-1/4 1 RA-6
UDB-941638	4866	7/16 14	1-5/16	11/32	3/4	7/8	7/8	FLAT	1-5/8 2 RB-6, RB-8 2-5/8 RB-6

EYE BOLTS FOR NATIONAL ACME MACHINES

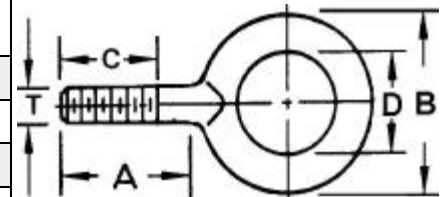


DO NOT GRIND OR MACHINE
OR UNDERCUT EYEBOLT
SPINDLE.

IF DAMAGED, REPLACE
EYEBOLT IMMEDIATELY.



UNITED PART NO.	ACME PART NO.	T THD	A LEN	B OD EYE	C THD	D EYE	TOOL SLIDE	MACHINE SIZE
UDB-702040	1646	1/4 20	3/4	1/2	3/4	1/4	FLAT	7/16 RA-6
UDB-702042	1938	7/16 20	1-7/8	5/8	3/4	3/8	FLAT	3/4 RA-8
UDB-702044	1938	7/16 20	1-7/8	5/8	3/4	3/8	FLAT	9/16 1 RA-6
UDB-702046	1946	7/16 20	1-11/16	5/8	3/4	3/8	ANGULAR	9/16 1 RA-6
UDB-702048	1945	1/2 20	2-5/8	11 16	7/8	3/8	FLAT & ANGULAR	1-1/4 RB-6 1-1/4 RB-8 1-5/8 RBN-8
UDB-702050	1947	1/2 20	3-3/16	11 16	7/8	3/8	FLAT	1-5/8 2 RB-6, RB-8
UDB-702052	A-44781	1/2 20	3-3/16	11 16	7/8	3/8	FLAT	2-5/8 RB-6
UDB-702054	1949	5/8 20	4	1	1-1/4	1/2	FLAT	3-1/2 RB-6



QUALITY STEEL

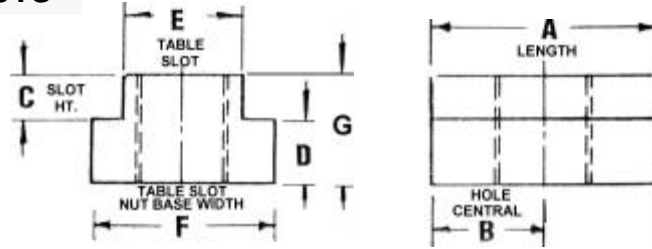
DROP FORGED

HEAT TREATED FOR
MAXIMUM STRENGTH

**ACME
TOOLING**

National ACME Slide Slot T Nuts

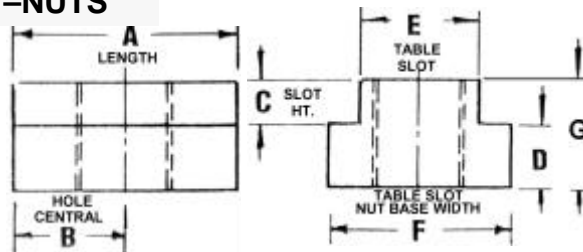
ACME CROSS SLIDE T-NUTS



BLACK OXIDE FINISH
HEAT TREATED
CASE HARDENED
1018 MATERIAL

UNITED PART NO.	ACME PART NO.	T DIA	THD	A LEN	B HOLE CENTRAL	C T-TABLE SLOT HT.	D SHOULDER HEIGHT	E TABLE SLOT	F WIDTH	G NUT HEIGHT	MACHINE SIZE
UDB-957030	52202	7/16	14	1-1/4	5/8	5/32	7/32	1/2	3/4	3/8	9/16 1 RA-6
UDB-957031		3/8	16	7/8	7/16	1/2	7/32	1/2	3/4	3/8	9/16 1 1-1/4 RA-6
UDB-957032	52203	3/8	16	1-1/4	5/8	1/8	7/32	1/2	3/4	11/32	9/16 1 RA-6
UDB-957034	51870	1/2	13	1-1/4	5/8	1/4	3/8	19/32	15/16	5/8	1-1/4 1 RA-6
UDB-957036	52206	5/8	11	1-1/4	5/8	5/16	7/16	23/32	1-1/4	3/4	1-5/8 2 RB-6
UDB-957038	14805	3/8	16	1	1/2	1/8	5/16	1/2	7/8	7/16	1-5/8 2 RB-6
UDB-957040	14799	3/8	16	1	1/2	7/32	7/32	15/32	3/4	7/16	2-5/8 3-1/2 RB-6
UDB-957042	14802	3/8	16	1	1/2	7/32	7/32	17/32	3/4	7/16	2-5/8 3-1/2 RB-6
UDB-957044	14801	7/16	14	1	1/2	7/32	7/32	17/32	3/4	7/32	2-5/8 3-1/2 RB-6
UDB-957046	52212	5/16	18	1	1/2	1/4	3/16	27/64	11/16	7/16	2-5/8 3-1/2 RB-6
UDB-957048	14803	1/2	13	1-1/4	5/8	1/4	11/32	1/2	13/16	15/32	2-5/8 3-1/2 RB-6

ACME TOOL SLIDE T-NUTS



BLACK OXIDE FINISH HEAT TREATED
CASE HARDENED 1018 MATERIAL



UNITED PART NO.	ACME PART NO.	T DIA	THD	A LEN	B HOLE	C T-TABLE	D SHOULDER	E TABLE	F WIDTH	G NUT	MACHINE
UDB-957060	A-1050	1/4	20	5/8	5/16	1/4	1/8	0.277	0.387	3/8	7/16 RA-6
UDB-957061		3/8	16	7/8	7/16	1/4	1/4	1/2	3/4	1/2	9/16 1-1-1/4 RA-6
UDB-957062	52210	3/8	16	1	1/2	9/64	15/64	27/64	21/32	3/8	3/4 RA-8
UDB-957064	A-1116	5/16	18	1	1/2	1/4	3/16	27/64	5/8	7/16	9/16 1 RA-6
UDB-957066	FLAT T.S. 5021	3/8	16	1	1/2	5/32	3/16	1/2	5/8	11/32	9/16 1 RA-6
UDB-957067		7/16	14	7/8	7/16	1/8	7/32	1/2	3/4	3/8	9/16 1 - 1-1/4 RA-8
UDB-957068	ANG. T.S. 52202	7/16	14	1-1/4	5/8	5/32	7/32	1/2	3/4	3/8	1-1/4 RB-6, 1-1/4 RB-8
UDB-957070	FLAT T.S. 14798	7/16	14	1	1/2	1/8	5/16	9/16	3/4	3/8	1-1/4 RB-6, 1-1/4 RB-8
UDB-957072	ANG. T.S. 14811	7/16	14	7/8	CENTRAL	7/32	11/32	11/32	7/8	9/16	1-1/4 RB-6, 1-1/4 RB-8
UDB-957074	14811	7/16	14	7/8	CENTRAL	7/32	11/32	11/32	7/8	9/16	1-5/8 2 RB-6, RB-8, 2-5/8 RB-6, RB8
UDB-957076	5026D	1/2	13	1-1/4	5/8	5/16	5/16	5/8	1	5/8	3-1/2 RB-6, RB-8, 4 RB-6, RB-8, 5-1/8, 5-1/2, 4-3/4, 5 RB-4, 6 RB-6